

Anti-IL17A antibody (24-155) [S4249RM] (STJ11104249)

STJ11104249

GENERAL INFORMATION

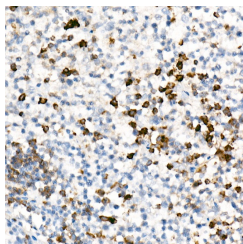
Product Type	Primary antibodies
Short Description	
Applications	IHC-P/ELISA
Host/Source	Rabbit
Reactivity	Human

PRODUCT PROPERTIES

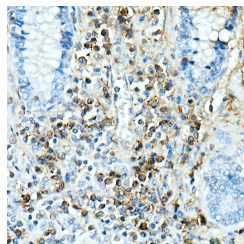
Clonality	Monoclonal
Clone ID	S4249RM
Concentration	Lot specific
Conjugation	Unconjugated
Purification	Affinity purification
Dilution Range	IHC-P:1:50-1:200 ELISA:Recommended starting concentration is 1 µg/mL. Please optimize the concentration based on your specific assay requirements.
Formulation	PBS with 0.05% Proclin300, 0.05% BSA, 50% Glycerol, pH 7.3.
Isotype	IgG
Storage Instruction	Store at -20°C for up to 1 year from the date of receipt, and avoid repeat freeze-thaw cycles.

TARGET INFORMATION

Gene ID	3605
Gene Symbol	IL17A
Uniprot ID	IL17_HUMAN
Immunogen	
Immunogen Region	24-155
Specificity	Recombinant fusion protein containing a sequence corresponding to amino acids 24-155 of human IL17A (NP_002181.1).
Immunogen Sequence	GITIPRNP GCPNSEDKNFPR TVMVNLNIHNRNTNTNPKRS SDYYNRSTSPWNLHRNEDPE RYPSVIWEAKCRHLGCINAD GNVDYHNMNSVPIQQEILVLR REPPHCPNSFRLEKILVSVG CTCVTPIVHHVA



Immunohistochemistry analysis of paraffin-embedded human tonsil using IL17A Rabbit monoclonal antibody (STJ11104249) at dilution of 1:100 (40x lens). Perform high pressure antigen retrieval with 10 mM citrate buffer pH 6.0 before commencing with immunohistochemistry staining protocol.



Immunohistochemistry analysis of paraffin-embedded human colon carcinoma using IL17A Rabbit monoclonal antibody (STJ11104249) at dilution of 1:100 (40x lens). Perform high pressure antigen retrieval with 10 mM citrate buffer pH 6.0 before commencing with immunohistochemistry staining protocol.

This product is suitable for in-vitro studies under the RESEARCH USE ONLY [RUO] licence. This product must not be used as for diagnostic or other medical purposes.
St John's Laboratory Ltd, Knowledge Dock Business Centre, University Way, London, E16 2RD | Tel: 0208 223 3081