

Anti-ATR antibody (2100-2200) [S4244RM] (STJ11104244)

STJ11104244

GENERAL INFORMATION

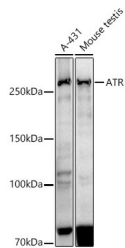
Product Type	Primary antibodies
Short Description	
Applications	WB/ELISA
Host/Source	Rabbit
Reactivity	Human/Mouse

PRODUCT PROPERTIES

Clonality	Monoclonal
Clone ID	S4244RM
Concentration	Lot specific
Conjugation	Unconjugated
Purification	Affinity purification
Dilution Range	WB:1:1000-1:2000 ELISA:Recommended starting concentration is 1 Mu g/mL. Please optimize the concentration based on your specific assay requirements.
Formulation	PBS with 0.05% Proclin300, 0.05% BSA, 50% Glycerol, pH 7.3.
Isotype	IgG
Storage	Store at -20°C for up to 1 year from the date of receipt, and avoid repeat freeze-thaw cycles.
Instruction	

TARGET INFORMATION

Gene ID	545
Gene Symbol	ATR
Uniprot ID	ATR_HUMAN
Immunogen	
Immunogen Region	2100-2200
Specificity	A synthetic peptide corresponding to a sequence within amino acids 2100-2200 of human ATR (NP_001175.2).
Immunogen Sequence	KAYEWEKAGRSDRVQMRNDL GKINKVITEHTNYLAPYQFL TAFSQLISRICHSHDEVFVV LMEIIAKVFLAYPQQAMWMM TAVSKSSYPMRVNRCKEILN K



Western blot analysis of extracts of various cell lines, using ATR antibody (STJ11104244) at 1:1000 dilution. Secondary antibody: HRP Goat Anti-Rabbit IgG (H+L) (STJS000856) at 1:10000 dilution. Lysates/proteins: 25 Mu g per lane. Blocking buffer: 3% nonfat dry milk in TBST. Detection: ECL Basic Kit. Exposure time: 180s.

This product is suitable for in-vitro studies under the RESEARCH USE ONLY [RUO] licence. This product must not be used as for diagnostic or other medical purposes.
St John's Laboratory Ltd, Knowledge Dock Business Centre, University Way, London, E16 2RD | Tel: 0208 223 3081