

Anti-EGLN1 antibody (1-100) [S4243RM] (STJ11104243)

STJ11104243

GENERAL INFORMATION

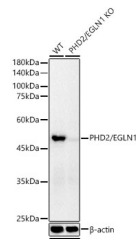
Product Type	Primary antibodies
Short Description	
Applications	WB/ELISA
Host/Source	Rabbit
Reactivity	Human

PRODUCT PROPERTIES

Clonality	Monoclonal
Clone ID	S4243RM
Concentration	Lot specific
Conjugation	Unconjugated
Purification	Affinity purification
Dilution Range	WB:1:2000-1:20000 ELISA:Recommended starting concentration is 1 Mu g/mL. Please optimize the concentration based on your specific assay requirements.
Formulation	PBS with 0.05% Proclin300, 0.05% BSA, 50% Glycerol, pH 7.3.
Isotype	IgG
Storage	Store at -20°C for up to 1 year from the date of receipt, and avoid repeat freeze-thaw cycles.
Instruction	

TARGET INFORMATION

Gene ID	54583
Gene Symbol	EGLN1
Uniprot ID	EGLN1_HUMAN
Immunogen	
Immunogen Region	1-100
Specificity	A synthetic peptide corresponding to a sequence within amino acids 1-100 of human PHD2/EGLN1 (NP_071334.1).
Immunogen Sequence	MANDSGGPGGPPSPERDRQY CELCGKMENLLRCSRCSF YCCKEHQRQDWKKHKLVCQG SEGALGHGVGPHQHSGPAPP AAVPPPRAGAREPRKAAARR



Western blot analysis of extracts from normal (control) and PHD2/EGLN1 knockout (KO) 293T (KO) cells, using PHD2/EGLN1 antibody (STJ11104243) at 1:20000 dilution. Secondary antibody: HRP Goat Anti-Rabbit IgG (H+L) (STJS000856) at 1:10000 dilution. Lysates/proteins: 25 Mu g per lane. Blocking buffer: 3% nonfat dry milk in TBST. Detection: ECL Basic Kit. Exposure time: 8s.