

Anti-ZBTB16 antibody (199-300) [S4224RM] (STJ11104224)
STJ11104224

GENERAL INFORMATION

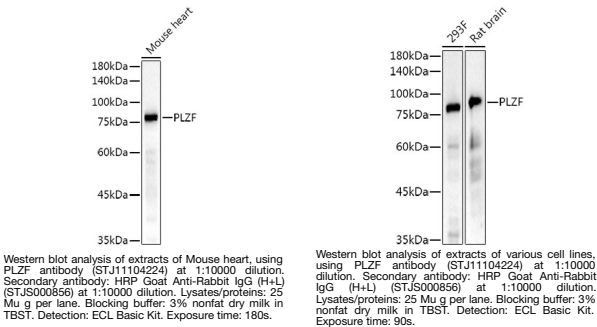
Product Type	Primary antibodies
Short Description	
Applications	WB/IF/ICC/ELISA
Host/Source	Rabbit
Reactivity	Human/Mouse/Rat

PRODUCT PROPERTIES

Clonality	Monoclonal
Clone ID	S4224RM
Concentration	Lot specific
Conjugation	Unconjugated
Purification	Affinity purification
Dilution Range	WB:1:2000-1:10000 IF/ICC:1:200-1:800 ELISA:Recommended starting concentration is 1 Mu g/mL. Please optimize the concentration based on your specific assay requirements.
Formulation	PBS with 0.05% Proclin300, 0.05% BSA, 50% Glycerol, pH 7.3.
Isotype	IgG
Storage Instruction	Store at -20°C for up to 1 year from the date of receipt, and avoid repeat freeze-thaw cycles.

TARGET INFORMATION

Gene ID	7704
Gene Symbol	ZBTB16
Uniprot ID	ZBT16_HUMAN
Immunogen	
Immunogen Region	199-300
Specificity	Recombinant fusion protein containing a sequence corresponding to amino acids 199-300 of human PLZF (NP_005997.2).
Immunogen Sequence	TKAAVDSLMTIGQSLQGLT QPPAGPEEPTLAGGGRHPGV AEVKTEMMQVDEVPSQDSPG AAESSISGGMGDKVEERGKE GPGTPTRSSVITSARELHYG RE



This product is suitable for in-vitro studies under the RESEARCH USE ONLY [RUO] licence. This product must not be used as for diagnostic or other medical purposes.
St John's Laboratory Ltd, Knowledge Dock Business Centre, University Way, London, E16 2RD | Tel: 0208 223 3081