

Anti-LRP5 antibody (1400-1500) [S4221RM] (STJ11104221)

STJ11104221

GENERAL INFORMATION

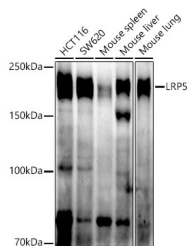
Product Type	Primary antibodies
Short Description	
Applications	WB
Host/Source	Rabbit
Reactivity	Human/Mouse

PRODUCT PROPERTIES

Clonality	Monoclonal
Clone ID	S4221RM
Concentration	Lot specific
Conjugation	Unconjugated
Purification	Affinity purification
Dilution Range	WB:1:500-1:1000
Formulation	PBS with 0.05% Proclin300, 0.05% BSA, 50% Glycerol, pH 7.3.
Isotype	IgG
Storage	Store at -20°C for up to 1 year from the date of receipt, and avoid repeat freeze-thaw cycles.
Instruction	

TARGET INFORMATION

Gene ID	4041
Gene Symbol	LRP5
Uniprot ID	LRP5_HUMAN
Immunogen	
Immunogen	1400-1500
Region	
Specificity	A synthetic peptide corresponding to a sequence within amino acids 1400-1500 of human LRP5 (NP_002326.2).
Immunogen	MGGVYFVCQRVVCQRYAGAN GPFPHEYVSGTPHVLNFIA PGGSQHGPFETGIACGKSMMS SVSLMGGRGGVPLYDRNHVT
Sequence	GASSSSSSSTKATLYPPIIN P



Western blot analysis of various lysates using LRP5 Rabbit monoclonal antibody (STJ11104221) at 1:1000 dilution. Secondary antibody: HRP Goat Anti-Rabbit IgG (H+L) (STJS000856) at 1:10000 dilution. Lysates/proteins: 25 µg per lane. Blocking buffer: 3% nonfat dry milk in TBST. Detection: ECL Enhanced Kit. Exposure time: 180s.

This product is suitable for in-vitro studies under the RESEARCH USE ONLY [RUO] licence. This product must not be used as for diagnostic or other medical purposes.
St John's Laboratory Ltd, Knowledge Dock Business Centre, University Way, London, E16 2RD | Tel: 0208 223 3081