

**Anti-NFE2L2 antibody (243-400) [S4220RM] (STJ11104220)**  
STJ11104220

**GENERAL INFORMATION**

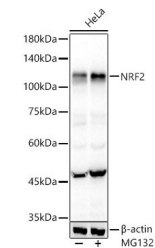
<b>Product Type</b>	Primary antibodies
<b>Short Description</b>	
<b>Applications</b>	WB/ELISA
<b>Host/Source</b>	Rabbit
<b>Reactivity</b>	Human/Mouse/Rat

**PRODUCT PROPERTIES**

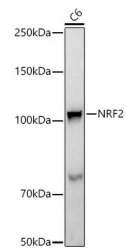
<b>Clonality</b>	Monoclonal
<b>Clone ID</b>	S4220RM
<b>Concentration</b>	Lot specific
<b>Conjugation</b>	Unconjugated
<b>Purification</b>	Affinity purification
<b>Dilution</b>	WB:1:1000-1:4000
<b>Range</b>	ELISA:Recommended starting concentration is 1 Mu g/mL. Please optimize the concentration based on your specific assay requirements.
<b>Formulation</b>	PBS with 0.05% Proclin300, 0.05% BSA, 50% Glycerol, pH 7.3.
<b>Isotype</b>	IgG
<b>Storage</b>	Store at -20°C for up to 1 year from the date of receipt, and avoid repeat freeze-thaw cycles.
<b>Instruction</b>	

**TARGET INFORMATION**

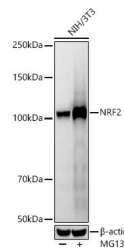
<b>Gene ID</b>	4780
<b>Gene Symbol</b>	NFE2L2
<b>Uniprot ID</b>	NF2L2_HUMAN
<b>Immunogen</b>	
<b>Immunogen Region</b>	243-400
<b>Specificity</b>	Recombinant fusion protein containing a sequence corresponding to amino acids 243-400 of human NRF2 (NP_006155.2). SPHFLNAFEDSFSSILSTED PNQLTVNSLNSDATVNTDFG DEFYSAFIAEPSISNSMPSP ATLSHSLSELLNGPIDVSDL
<b>Immunogen Sequence</b>	SLCKAFNQNHPESTAEFNDS DSGISLNTSPSVASPEHSVE SSSYGDTLGLSDSEVEELD SAPGSVKQNGPKTPVHSS



Western blot analysis of HeLa, using NRF2 antibody (STJ11104220) at 1:1000 dilution. HeLa cells were treated by MG132 (50 Mu M) at 37 A°C for 90 minutes. Secondary antibody: HRP Goat Anti-Rabbit IgG (H+L) (STJS000856) at 1:10000 dilution. Lysates/proteins: 25 Mu g per lane. Blocking buffer: 3% nonfat dry milk in TBST. Detection: ECL Basic Kit. Exposure time: 30s.



Western blot analysis of extracts of C6 cells, using NRF2 antibody (STJ11104220) at 1:1000 dilution. Secondary antibody: HRP Goat Anti-Rabbit IgG (H+L) (STJS000856) at 1:10000 dilution. Lysates/proteins: 25 Mu g per lane. Blocking buffer: 3% nonfat dry milk in TBST. Detection: ECL Basic Kit. Exposure time: 30s.



Western blot analysis of extracts of NIH/3T3 cells, using NRF2 antibody (STJ11104220) at 1:1000 dilution. NIH/3T3 cells were treated by MG132 (50 Mu M) at 37 A°C for 90 minutes. Secondary antibody: HRP Goat Anti-Rabbit IgG (H+L) (STJS000856) at 1:10000 dilution. Lysates/proteins: 25 Mu g per lane. Blocking buffer: 3% nonfat dry milk in TBST. Detection: ECL Basic Kit. Exposure time: 30s.

This product is suitable for in-vitro studies under the RESEARCH USE ONLY [RUO] licence. This product must not be used as for diagnostic or other medical purposes.  
St John's Laboratory Ltd, Knowledge Dock Business Centre, University Way, London, E16 2RD | Tel: 0208 223 3081