

Anti-PEPD antibody (400-493) [S4188RM] (STJ11104188)

STJ11104188

GENERAL INFORMATION

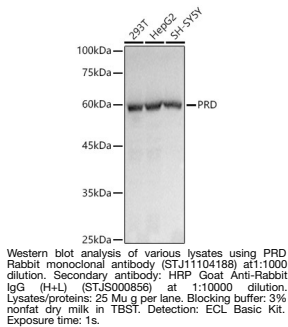
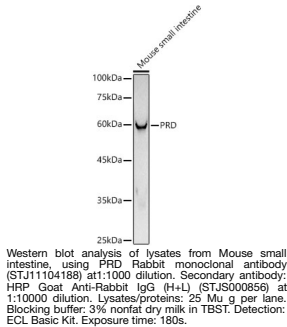
Product Type	Primary antibodies
Short Description	
Applications	WB/ELISA
Host/Source	Rabbit
Reactivity	Human/Mouse

PRODUCT PROPERTIES

Clonality	Monoclonal
Clone ID	S4188RM
Concentration	Lot specific
Conjugation	Unconjugated
Purification	Affinity purification
Dilution Range	WB:1:500-1:1000 ELISA:Recommended starting concentration is 1 μ g/mL. Please optimize the concentration based on your specific assay requirements.
Formulation	PBS with 0.02% Sodium Azide, 0.05% BSA, 50% Glycerol, pH 7.3.
Isotype	IgG
Storage Instruction	Store at -20°C for up to 1 year from the date of receipt, and avoid repeat freeze-thaw cycles.

TARGET INFORMATION

Gene ID	5184
Gene Symbol	PEPD
Uniprot ID	PEPD_HUMAN
Immunogen	
Immunogen Region	400-493
Specificity	Recombinant fusion protein containing a sequence corresponding to amino acids 400-493 of human PRD (NP_000276.2).
Immunogen Sequence	ARHLQPGMVLTVPEGIYFID HLLDEALADPARASFLNREV LQFRFRGGVRIEEDVVVTD SGIELLTCVPRTVEEIEACM AGCDKAFATPFSGPK



This product is suitable for in-vitro studies under the RESEARCH USE ONLY [RUO] licence. This product must not be used as for diagnostic or other medical purposes.
St John's Laboratory Ltd, Knowledge Dock Business Centre, University Way, London, E16 2RD | Tel: 0208 223 3081