

Anti-PCBP2 antibody (220-350) [S4187RM] (STJ11104187)
STJ11104187

GENERAL INFORMATION

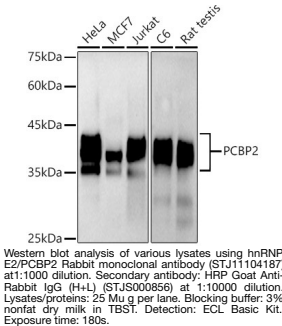
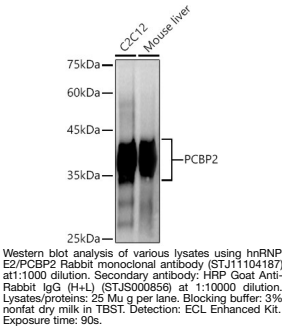
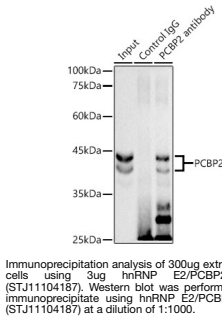
Product Type	Primary antibodies
Short Description	
Applications	WB/IP/ELISA
Host/Source	Rabbit
Reactivity	Human/Mouse/Rat

PRODUCT PROPERTIES

Clonality	Monoclonal
Clone ID	S4187RM
Concentration	Lot specific
Conjugation	Unconjugated
Purification	Affinity purification
Dilution Range	WB:1:500-1:1000 IP:0.5 Mu g-4 Mu g antibody for 200 Mu g-400 Mu g extracts of whole cells ELISA:Recommended starting concentration is 1 Mu g/mL. Please optimize the concentration based on your specific assay requirements.
Formulation	PBS with 0.02% Sodium Azide, 0.05% BSA, 50% Glycerol, pH 7.3.
Isotype	IgG
Storage Instruction	Store at -20°C for up to 1 year from the date of receipt, and avoid repeat freeze-thaw cycles.

TARGET INFORMATION

Gene ID	5094
Gene Symbol	PCBP2
Uniprot ID	PCBP2_HUMAN
Immunogen	
Immunogen Region	220-350
Specificity	Recombinant fusion protein containing a sequence corresponding to amino acids 220-350aa of human hnRNP E2/PCBP2 (NP_001122383.1)
Immunogen Sequence	PDLEGPPLEAYTIQGQYAIP QPDLTKLHQLAMQQSHFPMT HGNTGFSGIESSSPVKGYW GLDASAQTTSHLTIPNDLI GCIIGRQGAKINEIRQMGA QIKIANPVEGSTDRQVTTTG SAASISLAQYL



This product is suitable for in-vitro studies under the RESEARCH USE ONLY [RUO] licence. This product must not be used as for diagnostic or other medical purposes.
St John's Laboratory Ltd, Knowledge Dock Business Centre, University Way, London, E16 2RD | Tel: 0208 223 3081