

Anti-IL1RN antibody (27-178) (STJ11104175)

STJ11104175

GENERAL INFORMATION

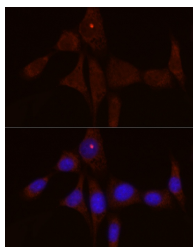
Product Type	Primary antibodies
Short Description	
Applications	WB/IF/ICC/ELISA
Host/Source	Rabbit
Reactivity	Human/Mouse

PRODUCT PROPERTIES

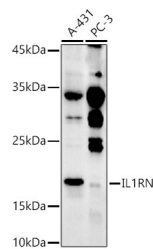
Clonality	Polyclonal
Clone ID	
Concentration	Lot specific
Conjugation	Unconjugated
Purification	Affinity purification
Dilution	WB:1:100-1:500
Range	IF/CC:1:50-1:200
	ELISA:Recommended starting concentration is 1 Mu g/mL. Please optimize the concentration based on your specific assay requirements.
Formulation	PBS with 0.05% Proclin300, 50% Glycerol, pH 7.3.
Isotype	IgG
Storage Instruction	Store at -20°C for up to 1 year from the date of receipt, and avoid repeat freeze-thaw cycles.

TARGET INFORMATION

Gene ID	16181
Gene Symbol	IL1rn
Uniprot ID	IL1RA_MOUSE
Immunogen	
Immunogen Region	27-178
Specificity	Recombinant fusion protein containing a sequence corresponding to amino acids 27-178 of mouse IL1RN (NP_001034790.1).
Immunogen Sequence	RPSGKRPCMKQAFRIWDTNQ KTFYLRNNQLIAGYLQGPNI KLEEKIDMVPIDLHSVFLGI HGGKLCCLCAKSGDDIKLQL EEVNIITDLSKNKEEDKRFTF IRSEKGPTTSFESAACPGWF LCTTLEADRPVSLTNTPEEP LIVTKFYFQEDQ



Immunofluorescence analysis of NIH/3T3 cells using IL1RN Rabbit polyclonal antibody (STJ11104175) at dilution of 1:50 (40x lens). Blue: DAPI for nuclear staining.



Western blot analysis of extracts of various cell lines, using IL1RN antibody (STJ11104175) at 1:500 dilution. Secondary antibody: HRP Goat Anti-Rabbit IgG (H+L) (STJS000856) at 1:10000 dilution. Lysates/proteins: 25 Mu g per lane. Blocking buffer: 3% nonfat dry milk in TBST. Detection: ECL Enhanced Kit. Exposure time: 180s.

This product is suitable for in-vitro studies under the RESEARCH USE ONLY [RUO] licence. This product must not be used as for diagnostic or other medical purposes.
St John's Laboratory Ltd, Knowledge Dock Business Centre, University Way, London, E16 2RD | Tel: 0208 223 3081