

Anti-CMTM3 antibody (1-100) (STJ11104173)

STJ11104173

GENERAL INFORMATION

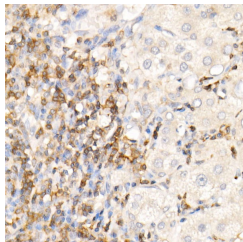
Product Type	Primary antibodies
Short Description	
Applications	IHC-P/ELISA
Host/Source	Rabbit
Reactivity	Human

PRODUCT PROPERTIES

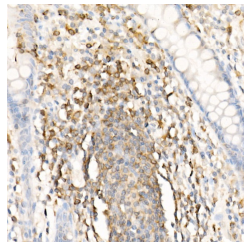
Clonality	Polyclonal
Clone ID	
Concentration	Lot specific
Conjugation	Unconjugated
Purification	Affinity purification
Dilution Range	IHC-P:1:50-1:200 ELISA: Recommended starting concentration is 1 µg/mL. Please optimize the concentration based on your specific assay requirements.
Formulation	PBS with 0.05% Proclin300, 50% Glycerol, pH 7.3.
Isotype	IgG
Storage	Store at -20°C for up to 1 year from the date of receipt, and avoid repeat freeze-thaw cycles.
Instruction	

TARGET INFORMATION

Gene ID	123920
Gene Symbol	CMTM3
Uniprot ID	CKLF3_HUMAN
Immunogen	
Immunogen	1-100
Region	
Specificity	A synthetic peptide corresponding to a sequence within amino acids 1-100 of human CMTM3 (NP_653202.1).
Immunogen	MWPPDPDPDPDEPAGGSRP GPAVPLRLALLPARAFLCSL KGRLLAESGLSFITFCYV ASSASAFLTAPLLEFLALY
Sequence	FLFADAMQLNDKWQGLCWPM



Immunohistochemistry analysis of paraffin-embedded human liver using CMTM3 Rabbit polyclonal antibody (STJ11104173) at dilution of 1:100 (40x lens). Perform high pressure antigen retrieval with 10 mM citrate buffer pH 6.0 before commencing with immunohistochemistry staining protocol.



Immunohistochemistry analysis of paraffin-embedded human colon using CMTM3 Rabbit polyclonal antibody (STJ11104173) at dilution of 1:100 (40x lens). Perform high pressure antigen retrieval with 10 mM citrate buffer pH 6.0 before commencing with immunohistochemistry staining protocol.