

Anti-UBE2D1 antibody (50-147) [S4166RM] (STJ11104166)

STJ11104166

GENERAL INFORMATION

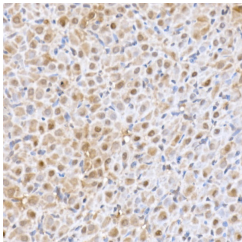
Product Type	Primary antibodies
Short Description	
Applications	IHC-P/ELISA
Host/Source	Rabbit
Reactivity	Human/Mouse/Rat

PRODUCT PROPERTIES

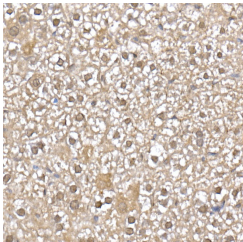
Clonality	Monoclonal
Clone ID	S4166RM
Concentration	Lot specific
Conjugation	Unconjugated
Purification	Affinity purification
Dilution Range	IHC-P:1:50-1:200 ELISA:Recommended starting concentration is 1 μ g/mL. Please optimize the concentration based on your specific assay requirements.
Formulation	PBS with 0.02% Sodium Azide, 0.05% BSA, 50% Glycerol, pH 7.3.
Isotype	IgG
Storage Instruction	Store at -20°C for up to 1 year from the date of receipt, and avoid repeat freeze-thaw cycles.

TARGET INFORMATION

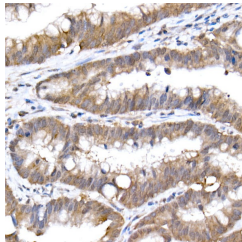
Gene ID	7321
Gene Symbol	UBE2D1
Uniprot ID	UB2D1_HUMAN
Immunogen	
Immunogen Region	50-147
Specificity	Recombinant fusion protein containing a sequence corresponding to amino acids 50-147 of human SFT (NP_003329.1).
Immunogen Sequence	FFLTVFHPTDYPFKPPKIAF TTKIYHPNINSNGSICLDIL RSQWSPALTVSKVLLSICSL LCDPNPDDPLVPDIAQYKS DKEKYNRHRAREWTQKYAM



Immunohistochemistry analysis of SFT in paraffin-embedded rat ovary using SFT Rabbit monoclonal antibody (STJ11104166) at dilution of 1:50 (40x lens). Perform high pressure antigen retrieval with 10 mM citrate buffer pH 6.0 before commencing with immunohistochemistry staining protocol.



Immunohistochemistry analysis of SFT in paraffin-embedded mouse liver using SFT Rabbit monoclonal antibody (STJ11104166) at dilution of 1:50 (40x lens). Perform high pressure antigen retrieval with 10 mM citrate buffer pH 6.0 before commencing with immunohistochemistry staining protocol.



Immunohistochemistry analysis of SFT in paraffin-embedded human colon carcinoma using SFT Rabbit monoclonal antibody (STJ11104166) at dilution of 1:50 (40x lens). Perform high pressure antigen retrieval with 10 mM citrate buffer pH 6.0 before commencing with immunohistochemistry staining protocol.

This product is suitable for in-vitro studies under the RESEARCH USE ONLY [RUO] licence. This product must not be used as for diagnostic or other medical purposes.
St John's Laboratory Ltd, Knowledge Dock Business Centre, University Way, London, E16 2RD | Tel: 0208 223 3081