

Anti-KATNB1 antibody (400-500) (STJ11104153)

STJ11104153

GENERAL INFORMATION

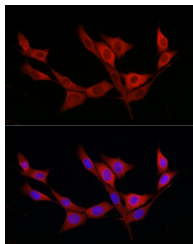
| | |
|--------------------------|--------------------|
| Product Type | Primary antibodies |
| Short Description | |
| Applications | WB/IF/ICC/ELISA |
| Host/Source | Rabbit |
| Reactivity | Mouse/Rat |

PRODUCT PROPERTIES

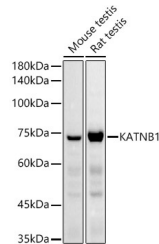
| | |
|----------------------------|---|
| Clonality | Polyclonal |
| Clone ID | |
| Concentration | Lot specific |
| Conjugation | Unconjugated |
| Purification | Affinity purification |
| Dilution Range | WB:1:500-1:1000 IF/ICC:1:50-1:200 ELISA:Recommended starting concentration is 1 Mu g/mL. Please optimize the concentration based on your specific assay requirements. |
| Formulation | PBS with 0.05% Proclin300, 50% Glycerol, pH 7.3. |
| Isotype | IgG |
| Storage Instruction | Store at -20°C for up to 1 year from the date of receipt, and avoid repeat freeze-thaw cycles. |

TARGET INFORMATION

| | |
|---------------------------|--|
| Gene ID | 10300 |
| Gene Symbol | KATNB1 |
| Uniprot ID | KTNB1_HUMAN |
| Immunogen | |
| Immunogen Region | 400-500 |
| Specificity | A synthetic peptide corresponding to a sequence within amino acids 400-500 of human KATNB1 (NP_005877.2). |
| Immunogen Sequence | SEPFPPAPPEDDAATAKEAAK PSPAMDVQFPVPNLEVLPRP PVVASTPAPKAEPALIPATR NEPIGLKASDFLPAVKIPQQ AELVDEDAMSQIRKGHDTMC V |



Immunofluorescence analysis of NIH/3T3 cells using KATNB1 Rabbit polyclonal antibody (STJ11104153) at dilution of 1:200 (40x lens). Blue: DAPI for nuclear staining.



Western blot analysis of extracts of various cell lines, using KATNB1 antibody (STJ11104153) at 1:1000 dilution. Secondary antibody: HRP Goat Anti-Rabbit IgG (H+L) (STJS000856) at 1:10000 dilution. Lysates/proteins: 25 Mu g per lane. Blocking buffer: 3% nonfat dry milk in TBST. Detection: ECL Basic Kit. Exposure time: 30s.

This product is suitable for in-vitro studies under the RESEARCH USE ONLY [RUO] licence. This product must not be used as for diagnostic or other medical purposes.
St John's Laboratory Ltd, Knowledge Dock Business Centre, University Way, London, E16 2RD | Tel: 0208 223 3081