

Anti-MSRB3 antibody (50-192) [S4145RM] (STJ11104145)

STJ11104145

GENERAL INFORMATION

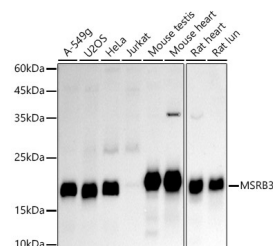
| | |
|--------------------------|--------------------|
| Product Type | Primary antibodies |
| Short Description | |
| Applications | WB/ELISA |
| Host/Source | Rabbit |
| Reactivity | Human/Mouse/Rat |

PRODUCT PROPERTIES

| | |
|----------------------|--|
| Clonality | Monoclonal |
| Clone ID | S4145RM |
| Concentration | Lot specific |
| Conjugation | Unconjugated |
| Purification | Affinity purification |
| Dilution | WB: 1:500-1:1000 |
| Range | ELISA: Recommended starting concentration is 1 µg/mL. Please optimize the concentration based on your specific assay requirements. |
| Formulation | PBS with 0.02% Sodium Azide, 0.05% BSA, 50% Glycerol, pH 7.3. |
| Isotype | IgG |
| Storage | Store at -20°C for up to 1 year from the date of receipt, and avoid repeat freeze-thaw cycles. |
| Instruction | |

TARGET INFORMATION

| | |
|---------------------------|--|
| Gene ID | 253827 |
| Gene Symbol | MSRB3 |
| Uniprot ID | MSRB3_HUMAN |
| Immunogen | |
| Immunogen Region | 50-192 |
| Specificity | Recombinant fusion protein containing a sequence corresponding to amino acids 50-192 of human MSRB3 (Q8IXL7). |
| Immunogen Sequence | LRKRLTPLQYHVTQEGTES AFEGEYTHHKDPGIYKVCVC GTPLFKSETKFDSGSGWPSF HDVINSEAITFTDDFSYGMH RVETSCSQCGAHLGHIFDDG PRPTGKRYCINSAALSFTPA DSSGTAEGSGVASPAQADK AEL |



Western blot analysis of various lysates, using MSRB3 antibody (STJ11104145) at 1:1000 dilution. Secondary antibody: HRP Goat Anti-Rabbit IgG (H+L) (STJ5000856) at 1:10000 dilution. Lysates/proteins: 25 µg per lane. Blocking buffer: 3% nonfat dry milk in TBST. Detection: ECL Basic Kit. Exposure time: 90s.

This product is suitable for in-vitro studies under the RESEARCH USE ONLY [RUO] licence. This product must not be used as for diagnostic or other medical purposes.
St John's Laboratory Ltd, Knowledge Dock Business Centre, University Way, London, E16 2RD | Tel: 0208 223 3081