

## Anti-STK26 antibody (317-416) [S4137RM] (STJ11104137)

STJ11104137

### GENERAL INFORMATION

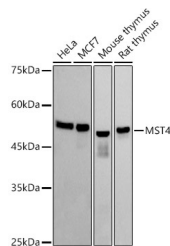
|                          |                    |
|--------------------------|--------------------|
| <b>Product Type</b>      | Primary antibodies |
| <b>Short Description</b> |                    |
| <b>Applications</b>      | WB/ELISA           |
| <b>Host/Source</b>       | Rabbit             |
| <b>Reactivity</b>        | Human/Mouse/Rat    |

### PRODUCT PROPERTIES

|                            |                                                                                                                                                        |
|----------------------------|--------------------------------------------------------------------------------------------------------------------------------------------------------|
| <b>Clonality</b>           | Monoclonal                                                                                                                                             |
| <b>Clone ID</b>            | S4137RM                                                                                                                                                |
| <b>Concentration</b>       | Lot specific                                                                                                                                           |
| <b>Conjugation</b>         | Unconjugated                                                                                                                                           |
| <b>Purification</b>        | Affinity purification                                                                                                                                  |
| <b>Dilution Range</b>      | WB:1:500-1:1000<br>ELISA:Recommended starting concentration is 1 Mu g/mL. Please optimize the concentration based on your specific assay requirements. |
| <b>Formulation</b>         | PBS with 0.02% Sodium Azide, 0.05% BSA, 50% Glycerol, pH 7.3.                                                                                          |
| <b>Isotype</b>             | IgG                                                                                                                                                    |
| <b>Storage Instruction</b> | Store at -20°C for up to 1 year from the date of receipt, and avoid repeat freeze-thaw cycles.                                                         |

### TARGET INFORMATION

|                    |                                                                                                    |
|--------------------|----------------------------------------------------------------------------------------------------|
| <b>Gene ID</b>     | 51765                                                                                              |
| <b>Gene Symbol</b> | STK26                                                                                              |
| <b>Uniprot ID</b>  | STK26_HUMAN                                                                                        |
| <b>Immunogen</b>   |                                                                                                    |
| <b>Immunogen</b>   | 317-416                                                                                            |
| <b>Region</b>      |                                                                                                    |
| <b>Specificity</b> | A synthetic peptide corresponding to a sequence within amino acids 317-416 of human MST4 (Q9P289). |
| <b>Immunogen</b>   | ENNTHPEWSFTTVRKPKDPK KVQNGAEQDLVQTLSCLSMI ITPAFALKQQDENNASRNQ AIEELEKSIIVAEACPGIT                  |
| <b>Sequence</b>    | DKMVKKLIEKFQKCSADESP                                                                               |



Western blot analysis of various lysates, using MST4 Rabbit monoclonal antibody (STJ11104137) at 1:1000 dilution. Secondary antibody: HRP Goat Anti-Rabbit IgG (H+L) (STJ5000856) at 1:10000 dilution. Lysates/proteins: 25 Mu g per lane. Blocking buffer: 3% nonfat dry milk in TBST. Detection: ECL Basic Kit. Exposure time: 10s.

This product is suitable for in-vitro studies under the RESEARCH USE ONLY [RUO] licence. This product must not be used as for diagnostic or other medical purposes.  
St John's Laboratory Ltd, Knowledge Dock Business Centre, University Way, London, E16 2RD | Tel: 0208 223 3081