

Anti-EIF1AX antibody (65-144) [S4132RM] (STJ11104132)

STJ11104132

GENERAL INFORMATION

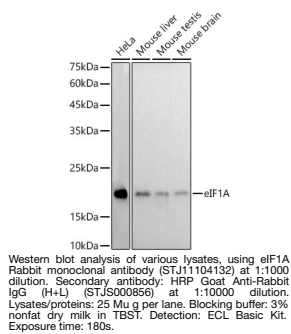
Product Type	Primary antibodies
Short Description	
Applications	WB/ELISA
Host/Source	Rabbit
Reactivity	Human/Mouse

PRODUCT PROPERTIES

Clonality	Monoclonal
Clone ID	S4132RM
Concentration	Lot specific
Conjugation	Unconjugated
Purification	Affinity purification
Dilution Range	WB:1:500-1:1000 ELISA:Recommended starting concentration is 1 μ g/mL. Please optimize the concentration based on your specific assay requirements.
Formulation	PBS with 0.02% Sodium Azide, 0.05% BSA, 50% Glycerol, pH 7.3.
Isotype	IgG
Storage Instruction	Store at -20°C for up to 1 year from the date of receipt, and avoid repeat freeze-thaw cycles.

TARGET INFORMATION

Gene ID	1964
Gene Symbol	EIF1AX
Uniprot ID	IF1AX_HUMAN
Immunogen	
Immunogen Region	65-144
Specificity	A synthetic peptide corresponding to a sequence within amino acids 65-144 of human eIF1A (P47813).
Immunogen Sequence	LRKKVWINTSDIILVGLRDY QDNKADVILKYNADERSLK AYGELPEHAKINETDTFGPG DDDEIQFDDIGDDEDEDIDDI



This product is suitable for in-vitro studies under the RESEARCH USE ONLY [RUO] licence. This product must not be used as for diagnostic or other medical purposes.
St John's Laboratory Ltd, Knowledge Dock Business Centre, University Way, London, E16 2RD | Tel: 0208 223 3081