

Anti-DLX3 antibody (188-287) [S4129RM] (STJ11104129)

STJ11104129

GENERAL INFORMATION

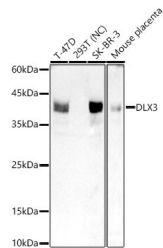
Product Type	Primary antibodies
Short Description	
Applications	WB/ELISA
Host/Source	Rabbit
Reactivity	Human/Mouse

PRODUCT PROPERTIES

Clonality	Monoclonal
Clone ID	S4129RM
Concentration	Lot specific
Conjugation	Unconjugated
Purification	Affinity purification
Dilution Range	WB:1:500-1:1000 ELISA:Recommended starting concentration is 1 Mu g/mL. Please optimize the concentration based on your specific assay requirements.
Formulation	PBS with 0.02% Sodium Azide, 0.05% BSA, 50% Glycerol, pH 7.3.
Isotype	IgG
Storage	Store at -20°C for up to 1 year from the date of receipt, and avoid repeat freeze-thaw cycles.
Instruction	

TARGET INFORMATION

Gene ID	1747
Gene Symbol	DLX3
Uniprot ID	DLX3_HUMAN
Immunogen	
Immunogen Region	188-287
Specificity	A synthetic peptide corresponding to a sequence within amino acids 188-287 of human DLX3 (O60479).
Immunogen Sequence	YKNGEVPLEHSPNNSDSMAC NSPPSPALWDTSSHSTPAPA RSQLPPPLPYASPSYLDLP TNSWYHAQNLSGPHLQQQPP QPATLHHASPGPPPNPGAVY



Western blot analysis of various lysates, using DLX3 Rabbit monoclonal antibody (STJ11104129) at 1:1000 dilution. Secondary antibody: HRP Goat Anti-Rabbit IgG (H+L) (STJS0009856) at 1:10000 dilution. Lysates/proteins: 25 Mu g per lane. Blocking buffer: 3% nonfat dry milk in TBST. Detection: ECL Basic Kit. Negative control (NC): 293T. Exposure time: 90s.

This product is suitable for in-vitro studies under the RESEARCH USE ONLY [RUO] licence. This product must not be used as for diagnostic or other medical purposes.
St John's Laboratory Ltd, Knowledge Dock Business Centre, University Way, London, E16 2RD | Tel: 0208 223 3081