

Anti-GPRC5B antibody (304-403) [S4128RM] (STJ11104128)

STJ11104128

GENERAL INFORMATION

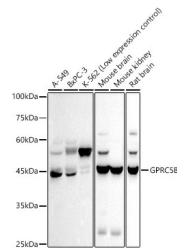
Product Type	Primary antibodies
Short Description	
Applications	WB/ELISA
Host/Source	Rabbit
Reactivity	Human/Mouse/Rat

PRODUCT PROPERTIES

Clonality	Monoclonal
Clone ID	S4128RM
Concentration	Lot specific
Conjugation	Unconjugated
Purification	Affinity purification
Dilution Range	WB:1:500-1:1000 ELISA:Recommended starting concentration is 1 Mu g/mL. Please optimize the concentration based on your specific assay requirements.
Formulation	PBS with 0.02% Sodium Azide, 0.05% BSA, 50% Glycerol, pH 7.3.
Isotype	IgG
Storage	Store at -20°C for up to 1 year from the date of receipt, and avoid repeat freeze-thaw cycles.
Instruction	

TARGET INFORMATION

Gene ID	51704
Gene Symbol	GPRC5B
Uniprot ID	GPC5B_HUMAN
Immunogen	
Immunogen Region	304-403
Specificity	A synthetic peptide corresponding to a sequence within amino acids 304-403 of human GPRC5B (NP_057319.1).
Immunogen Sequence	TPNYFDTSQPRMRETAFEED VQLPRAYMENKAFMSDEHNA ALRTAGFPNGSLGKRPSGSL GKRPSAPFRSNVYQPTEMAV VLNGGTIPTAPPSHTGRHLW



Western blot analysis of extracts of various cell lines, using GPRC5B antibody (STJ11104128) at 1:500 dilution. Secondary antibody: HRP Goat Anti-Rabbit IgG (H+L) (STJ5000856) at 1:10000 dilution. Lysates/proteins: 25 Mu g per lane. Blocking buffer: 3% nonfat dry milk in TBST. Detection: ECL Basic Kit. Exposure time: 30s.

This product is suitable for in-vitro studies under the RESEARCH USE ONLY [RUO] licence. This product must not be used as for diagnostic or other medical purposes.
St John's Laboratory Ltd, Knowledge Dock Business Centre, University Way, London, E16 2RD | Tel: 0208 223 3081