

Anti-TRIM24 antibody (400-500) [S4124RM] (STJ11104124)

STJ11104124

GENERAL INFORMATION

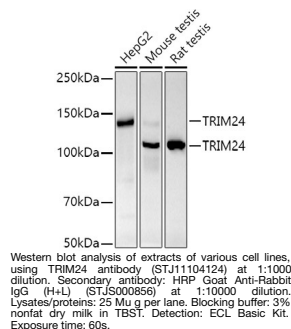
Product Type	Primary antibodies
Short Description	
Applications	WB/ELISA
Host/Source	Rabbit
Reactivity	Human/Mouse/Rat

PRODUCT PROPERTIES

Clonality	Monoclonal
Clone ID	S4124RM
Concentration	Lot specific
Conjugation	Unconjugated
Purification	Affinity purification
Dilution Range	WB:1:500-1:1000 ELISA:Recommended starting concentration is 1 Mu g/mL. Please optimize the concentration based on your specific assay requirements.
Formulation	PBS with 0.02% Sodium Azide, 0.05% BSA, 50% Glycerol, pH 7.3.
Isotype	IgG
Storage	Store at -20°C for up to 1 year from the date of receipt, and avoid repeat freeze-thaw cycles.
Instruction	

TARGET INFORMATION

Gene ID	8805
Gene Symbol	TRIM24
Uniprot ID	TIF1A_HUMAN
Immunogen	
Immunogen Region	400-500
Specificity	A synthetic peptide corresponding to a sequence within amino acids 400-500 of human TRIM24 (O15164).
Immunogen Sequence	TNNTIQFHCDPSFWAQNIIN LGSLVIEDKESQPMPKQNP VVEQNSQPPSGLSSNQLSKF PTQISLAQLRLQHMQQQVMA QRQQVQRRPAPVGLPNPRMQ G



This product is suitable for in-vitro studies under the RESEARCH USE ONLY [RUO] licence. This product must not be used as for diagnostic or other medical purposes.
St John's Laboratory Ltd, Knowledge Dock Business Centre, University Way, London, E16 2RD | Tel: 0208 223 3081