

Anti-C3orf38 antibody (51-200) [S4122RM] (STJ11104122)

STJ11104122

GENERAL INFORMATION

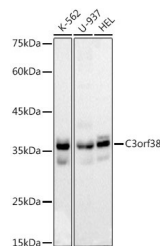
Product Type	Primary antibodies
Short Description	
Applications	WB/ELISA
Host/Source	Rabbit
Reactivity	Human

PRODUCT PROPERTIES

Clonality	Monoclonal
Clone ID	S4122RM
Concentration	Lot specific
Conjugation	Unconjugated
Purification	Affinity purification
Dilution	WB:1:500-1:1000
Range	ELISA:Recommended starting concentration is 1 µg/mL. Please optimize the concentration based on your specific assay requirements.
Formulation	PBS with 0.02% Sodium Azide, 0.05% BSA, 50% Glycerol, pH 7.3.
Isotype	IgG
Storage	Store at -20°C for up to 1 year from the date of receipt, and avoid repeat freeze-thaw cycles.
Instruction	

TARGET INFORMATION

Gene ID	285237
Gene Symbol	C3orf38
Uniprot ID	CC038_HUMAN
Immunogen	
Immunogen Region	51-200
Specificity	Recombinant fusion protein containing a sequence corresponding to amino acids 51-200 of human C3orf38 (Q5JPI3).
Immunogen Sequence	LAYSQSAEELLRRRKVHREV IFKYLATQGIVPPATEKHN LIQHAKDYWQKPOLKLKET PEPVTKTEDIHLEFQQQVKED KKAEEKVDFRRLLGEEFCHWFF GLLNSQNPFLGPPQDEWGPQ HFWHDVKLRFYYNTSEQNVM DYHGAEIVSL



Western blot analysis of extracts of various cell lines, using C3orf38 antibody (STJ11104122) at 1:1000 dilution. Secondary antibody: HRP Goat Anti-Rabbit IgG (H+L) (STJS000856) at 1:10000 dilution. Lysates/proteins: 25 µg per lane. Blocking buffer: 3% nonfat dry milk in TBST. Detection: ECL Basic Kit. Exposure time: 30s.

This product is suitable for in-vitro studies under the RESEARCH USE ONLY [RUO] licence. This product must not be used as for diagnostic or other medical purposes.
St John's Laboratory Ltd, Knowledge Dock Business Centre, University Way, London, E16 2RD | Tel: 0208 223 3081