

Anti-TRIP10 antibody (1-100) [S4097RM] (STJ11104097)

STJ11104097

GENERAL INFORMATION

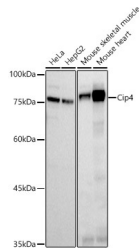
Product Type	Primary antibodies
Short Description	
Applications	WB/ELISA
Host/Source	Rabbit
Reactivity	Human/Mouse

PRODUCT PROPERTIES

Clonality	Monoclonal
Clone ID	S4097RM
Concentration	Lot specific
Conjugation	Unconjugated
Purification	Affinity purification
Dilution Range	WB: 1:100-1:500 ELISA: Recommended starting concentration is 1 µg/mL. Please optimize the concentration based on your specific assay requirements.
Formulation	PBS with 0.02% Sodium Azide, 0.05% BSA, 50% Glycerol, pH 7.3.
Isotype	IgG
Storage	Store at -20°C for up to 1 year from the date of receipt, and avoid repeat freeze-thaw cycles.
Instruction	

TARGET INFORMATION

Gene ID	9322
Gene Symbol	TRIP10
Uniprot ID	CIP4_HUMAN
Immunogen	
Immunogen Region	1-100
Specificity	A synthetic peptide corresponding to a sequence within amino acids 1-100 of human Cip4 (Q15642).
Immunogen Sequence	MDWGTGLWDQFEVLERHTQW GLDLLDRYVKFKERVEVEQ AYAKQLRSLVKKYLPRPAK DDPEKFSQQSFVQILQEV NDFAGQRELVAENLSVRVCL



Western blot analysis of various lysates, using Cip4 Rabbit monoclonal antibody (STJ11104097) at 1:500 dilution. Secondary antibody: HRP Goat Anti-Rabbit IgG (H+L) (STJ5000856) at 1:10000 dilution. Lysates/proteins: 25 µg per lane. Blocking buffer: 3% nonfat dry milk in TBST. Detection: ECL Basic Kit. Exposure time: 60s.