

Anti-OsWRKY53 antibody (1-181 aa) (STJ11104051)

STJ11104051

GENERAL INFORMATION

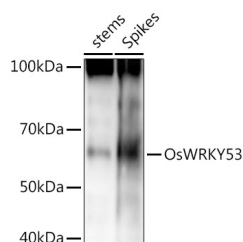
Product Type	Primary antibodies
Short Description	
Applications	WB/ELISA
Host/Source	Rabbit
Reactivity	O.sativa

PRODUCT PROPERTIES

Clonality	Polyclonal
Clone ID	
Concentration	Lot specific
Conjugation	Unconjugated
Purification	Affinity purification
Dilution	WB:1:500-1:2000
Range	ELISA:Recommended starting concentration is 1 Mu g/mL. Please optimize the concentration based on your specific assay requirements.
Formulation	PBS with 0.05% Proclin300, 50% Glycerol, pH 7.3.
Isotype	IgG
Storage	Store at -20°C for up to 1 year from the date of receipt, and avoid repeat freeze-thaw cycles.
Instruction	

TARGET INFORMATION

Gene ID	
Gene Symbol	
Uniprot ID	
Immunogen	
Immunogen	1-181 aa
Region	
Specificity	Recombinant fusion protein containing a sequence corresponding to amino acids 1-181 of Oryza sativa OsWRKY53. (Q5W6M7).
Immunogen	MASSTGGLDHGFTFTPPPI TSFTELLSGGGDLLGAGGE ERSRPGFSRGGARVGGGVPK FKSAQPPSLPLSPPPVSPSS
Sequence	YFAIPPGLSPTELLDSPVLL SSSHILASPTTGAIPAQRYD WKASADLIASQQDDSRGDFS FHTNSDAMAAQPASFPSFKE QEQQVVESSKNGAAAASSNK S



Western blot analysis of extracts of various tissues from the japonica rice (*Oryza sativa* L.) variety Zhonghua 11, using OsWRKY53 Rabbit polyclonal antibody (STJ11104051) at 1:1000 dilution. Secondary antibody: HRP Goat Anti-Rabbit IgG (H+L) (STJ5000856) at 1:10000 dilution. Lysates/proteins: 25 Mu g per lane. Blocking buffer: 3% nonfat dry milk in TBST. Detection: ECL Basic Kit. Exposure time: 30s.

This product is suitable for in-vitro studies under the RESEARCH USE ONLY [RUO] licence. This product must not be used as for diagnostic or other medical purposes.
St John's Laboratory Ltd, Knowledge Dock Business Centre, University Way, London, E16 2RD | Tel: 0208 223 3081