

Anti-OsGI antibody (820-1090 aa) (STJ11104050)

STJ11104050

GENERAL INFORMATION

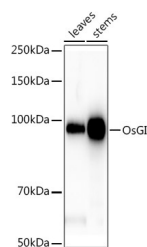
Product Type	Primary antibodies
Short Description	
Applications	WB/ELISA
Host/Source	Rabbit
Reactivity	O.sativa

PRODUCT PROPERTIES

Clonality	Polyclonal
Clone ID	
Concentration	Lot specific
Conjugation	Unconjugated
Purification	Affinity purification
Dilution	WB:1:500-1:2000
Range	ELISA:Recommended starting concentration is 1 Mu g/mL. Please optimize the concentration based on your specific assay requirements.
Formulation	PBS with 0.05% Proclin300, 50% Glycerol, pH 7.3.
Isotype	IgG
Storage	Store at -20°C for up to 1 year from the date of receipt, and avoid repeat freeze-thaw cycles.
Instruction	

TARGET INFORMATION

Gene ID	
Gene Symbol	
Uniprot ID	
Immunogen	
Immunogen	820-1090 aa
Region	
Specificity	Recombinant fusion protein containing a sequence corresponding to amino acids 820-1090 of Oryza sativa OsGI. (Q9AWL7).
Immunogen	ALEKKDASRSHRKNKFARPL LKCAEDVILNGDVASTSGKA IASLQVEASDLANFLTMDRN GGYRGSQTLLRSVLSEKQEL
Sequence	CFSVVSLLWQKLIASPEMQM SAESTSAHQGWWRKVVDALCD IVSASPTKASAAIVLQAEKD LQPWIARDDEQGQKMWRVNVQ RIVKLIAEMLRNHDSPEALV ILASASDLLLRATDGMVLVDG EACTLPQLELLEVTARAVHL IVEWGDSGVSVADGLSNLL



Western blot analysis of extracts of various tissues from the japonica rice (*Oryza sativa* L.) variety Zhonghua 11, using OsGI Rabbit polyclonal antibody (STJ11104050) at 1:1000 dilution. Secondary antibody: HRP Goat Anti-Rabbit IgG (H+L) (STJ5000856) at 1:10000 dilution. Lysates/proteins: 25 Mu g per lane. Blocking buffer: 3% nonfat dry milk in TBST. Detection: ECL Basic Kit. Exposure time: 60s.

This product is suitable for in-vitro studies under the RESEARCH USE ONLY [RUO] licence. This product must not be used as for diagnostic or other medical purposes.
St John's Laboratory Ltd, Knowledge Dock Business Centre, University Way, London, E16 2RD | Tel: 0208 223 3081