

Anti-OsAAP6 antibody (1-100 aa) (STJ11104045)

STJ11104045

GENERAL INFORMATION

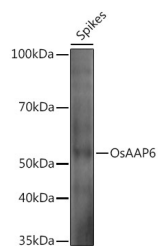
Product Type	Primary antibodies
Short Description	
Applications	WB/ELISA
Host/Source	Rabbit
Reactivity	O.sativa

PRODUCT PROPERTIES

Clonality	Polyclonal
Clone ID	
Concentration	Lot specific
Conjugation	Unconjugated
Purification	Affinity purification
Dilution Range	WB:1:500-1:2000 ELISA:Recommended starting concentration is 1 Mu g/mL. Please optimize the concentration based on your specific assay requirements.
Formulation	PBS with 0.05% Proclin300, 50% Glycerol, pH 7.3.
Isotype	IgG
Storage	Store at -20°C for up to 1 year from the date of receipt, and avoid repeat freeze-thaw cycles.
Instruction	

TARGET INFORMATION

Gene ID	
Gene Symbol	
Uniprot ID	
Immunogen	
Immunogen	1-100 aa
Region	
Specificity	Recombinant fusion protein containing a sequence corresponding to amino acids 1-100 of Oryza sativa OsAAP6. (Q5N9H2).
Immunogen	MDVEKVERKEVAVDDDDGRVR TGTWVTATTHAITAVIGSGV LALPWSVAQMGWVLGPALV VCAYITYYTAVLLCDCYRTP
Sequence	DPVHGKRNITYMDVVRSLG



Western blot analysis of extracts of various tissues from the japonica rice (Oryza sativa L.) variety Zhonghua 11, using OsAAP6 Rabbit polyclonal antibody (STJ11104045) at 1:1000 dilution. Secondary antibody: HRP-Goat Anti-Rabbit IgG (H+L) (STJ5000856) at 1:10000 dilution. Lysates/proteins: 25 Mu g per lane. Blocking buffer: 3% nonfat dry milk in TBST. Detection: ECL Enhanced Kit. Exposure time: 30s.

This product is suitable for in-vitro studies under the RESEARCH USE ONLY [RUO] licence. This product must not be used as for diagnostic or other medical purposes.
St John's Laboratory Ltd, Knowledge Dock Business Centre, University Way, London, E16 2RD | Tel: 0208 223 3081