

Anti-OsFD2 antibody (1-100 aa) (STJ11104037)

STJ11104037

GENERAL INFORMATION

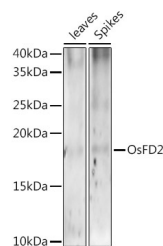
Product Type	Primary antibodies
Short Description	
Applications	WB/ELISA
Host/Source	Rabbit
Reactivity	O.sativa

PRODUCT PROPERTIES

Clonality	Polyclonal
Clone ID	
Concentration	Lot specific
Conjugation	Unconjugated
Purification	Affinity purification
Dilution Range	WB:1:500-1:2000 ELISA:Recommended starting concentration is 1 Mu g/mL. Please optimize the concentration based on your specific assay requirements.
Formulation	PBS with 0.05% Proclin300, 50% Glycerol, pH 7.3.
Isotype	IgG
Storage Instruction	Store at -20°C for up to 1 year from the date of receipt, and avoid repeat freeze-thaw cycles.

TARGET INFORMATION

Gene ID	
Gene Symbol	
Uniprot ID	
Immunogen	
Immunogen Region	1-100 aa
Specificity	Recombinant fusion protein containing a sequence corresponding to amino acids 1-100 of Oryza sativa OsFD2. (Q5Z4G3).
Immunogen Sequence	MANYHHQEYYQMAAAVAW PREPDSPQLSIMSGCSSLFS ISTLRDDDDGGGVRLAGAAL PATPVSLAGIAGGASTPGGD EVDMEVRQQSGSGSGDDRRTI



Western blot analysis of extracts of various tissues from the japonica rice (*Oryza sativa* L.) variety Zhonghua 11, using OsFD2 Rabbit polyclonal antibody (STJ11104037) at 1:1000 dilution. Secondary antibody: HRP-Goat Anti-Rabbit IgG (H+L) (STJS000856) at 1:10000 dilution. Lysates/proteins: 25 Mu g per lane. Blocking buffer: 3% nonfat dry milk in TBST. Detection: ECL Enhanced Kit. Exposure time: 600s.

This product is suitable for in-vitro studies under the RESEARCH USE ONLY [RUO] licence. This product must not be used as for diagnostic or other medical purposes.
St John's Laboratory Ltd, Knowledge Dock Business Centre, University Way, London, E16 2RD | Tel: 0208 223 3081