

## Anti-SST antibody (23-116) [S4006RM] (STJ11104006)

STJ11104006

### GENERAL INFORMATION

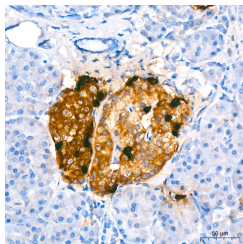
<b>Product Type</b>	Primary antibodies
<b>Short Description</b>	
<b>Applications</b>	IHC-P/IF/ICC/ELISA
<b>Host/Source</b>	Rabbit
<b>Reactivity</b>	Human/Mouse/Rat

### PRODUCT PROPERTIES

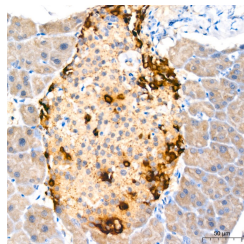
<b>Clonality</b>	Monoclonal
<b>Clone ID</b>	S4006RM
<b>Concentration</b>	Lot specific
<b>Conjugation</b>	Unconjugated
<b>Purification</b>	Affinity purification
<b>Dilution Range</b>	IHC-P:1:500-1:2000 IF/ICC:1:50-1:200 ELISA:Recommended starting concentration is 1 µg/mL. Please optimize the concentration based on your specific assay requirements.
<b>Formulation</b>	PBS with 0.05% Proclin300, 0.05% BSA, 50% Glycerol, pH 7.3.
<b>Isotype</b>	IgG
<b>Storage Instruction</b>	Store at -20°C for up to 1 year from the date of receipt, and avoid repeat freeze-thaw cycles.

### TARGET INFORMATION

<b>Gene ID</b>	6750
<b>Gene Symbol</b>	SST
<b>Uniprot ID</b>	SMS_HUMAN
<b>Immunogen</b>	
<b>Immunogen Region</b>	23-116
<b>Specificity</b>	Recombinant fusion protein containing a sequence corresponding to amino acids 23-116 of human Somatostatin (SST) (NP_001039.1).
<b>Immunogen Sequence</b>	TGAPSDPRLRQFLQKSLAAA AGKQELAKYFLAELLSEPNQ TENDALEPEDLSQAAEQDEM RLELQRSANSNPAMAPRERK AGCKNFFWKFTFTSC



Immunohistochemistry analysis of human pancreas tissue (SST) in paraffin-embedded tissue using Anti-Somatostatin (SST) Rabbit monoclonal antibody (STJ11104006) at a dilution of 1:500 (40x lens). High pressure antigen retrieval was performed with 0.01 M citrate buffer (pH 6.0) prior to immunohistochemistry staining.



Immunohistochemistry analysis of mouse pancreas tissue (SST) in paraffin-embedded tissue using Anti-Somatostatin (SST) Rabbit monoclonal antibody (STJ11104006) at a dilution of 1:500 (40x lens). High pressure antigen retrieval was performed with 0.01 M citrate buffer (pH 6.0) prior to immunohistochemistry staining.