

Anti-SNAC1 antibody (1-316 aa) (STJ11103992)

STJ11103992

GENERAL INFORMATION

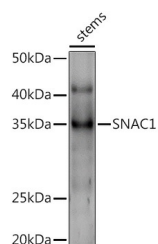
Product Type	Primary antibodies
Short Description	
Applications	WB/ELISA
Host/Source	Rabbit
Reactivity	O.sativa

PRODUCT PROPERTIES

Clonality	Polyclonal
Clone ID	
Concentration	Lot specific
Conjugation	Unconjugated
Purification	Affinity purification
Dilution	WB:1:500-1:2000
Range	ELISA:Recommended starting concentration is 1 Mu g/mL. Please optimize the concentration based on your specific assay requirements.
Formulation	PBS with 0.01% Thimerosal, 50% Glycerol, pH 7.3.
Isotype	IgG
Storage Instruction	Store at -20°C for up to 1 year from the date of receipt, and avoid repeat freeze-thaw cycles.

TARGET INFORMATION

Gene ID	
Gene Symbol	
Uniprot ID	
Immunogen	
Immunogen Region	1-316 aa
Specificity	Recombinant fusion protein containing a sequence corresponding to amino acids 1-316 of Oryza sativa SNAC1. (Q75HE5).
Immunogen Sequence	MGMGMRRERDAEAEINLPPG FRFHPTDDELVEHYLCRKAA GQRLVPPIIAEVDLYKFDPW DLPERALFGAREWYFFTPRD RKYPNGSRPNRAAGNGYWKA TGADKPVAPRGRTLGIKKAL VFYAGKAPRGVKTDWIMHEY RLADAGRAAAGAKKGSRLRD DWVLCRLYNKKNEWKMQQG KEVKEEASDMVTSQSHSHTH SWGETRTPSEIVDNDPFPE LDSFPAPQPAPPATAMMV



Western blot analysis of extracts of various tissues from the japonica rice (*Oryza sativa* L.) variety Zhonghua 11, using SNAC1 Rabbit polyclonal antibody (STJ11103992) at 1:1000 dilution. Secondary antibody: HRP Goat Anti-Rabbit IgG (H+L) (STJ500856) at 1:10000 dilution. Lysates/proteins: 25 Mu g per lane. Blocking buffer: 3% nonfat dry milk in TBST. Detection: ECL Enhanced Kit. Exposure time: 30s.

This product is suitable for in-vitro studies under the RESEARCH USE ONLY [RUO] licence. This product must not be used as for diagnostic or other medical purposes.
St John's Laboratory Ltd, Knowledge Dock Business Centre, University Way, London, E16 2RD | Tel: 0208 223 3081