

Anti-FPR1 antibody (250-350) (STJ11103976)

STJ11103976

GENERAL INFORMATION

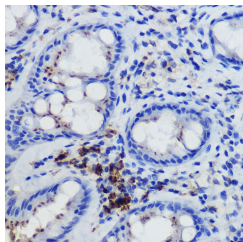
Product Type	Primary antibodies
Short Description	
Applications	WB/IHC-P/ELISA
Host/Source	Rabbit
Reactivity	Human

PRODUCT PROPERTIES

Clonality	Polyclonal
Clone ID	
Concentration	Lot specific
Conjugation	Unconjugated
Purification	Affinity purification
Dilution Range	WB:1:500-1:2000 IHC-P:1:50-1:200 ELISA:Recommended starting concentration is 1 µg/mL. Please optimize the concentration based on your specific assay requirements.
Formulation	PBS with 0.05% Proclin300, 50% Glycerol, pH 7.3.
Isotype	IgG
Storage Instruction	Store at -20°C for up to 1 year from the date of receipt, and avoid repeat freeze-thaw cycles.

TARGET INFORMATION

Gene ID	2357
Gene Symbol	FPR1
Uniprot ID	FPR1_HUMAN
Immunogen	
Immunogen Region	250-350
Specificity	A synthetic peptide corresponding to a sequence within amino acids 250-350 of human FPR1 (NP_002020.1).
Immunogen Sequence	FFLCWSPYQVVALIATVRIR ELLQGMKEIGIAVDVTSAL AFFNSCLNPMLYVFMGQDFR ERLIHALPASLERALTEDST QTSDDATNSTLPSAEVELQA K



Immunohistochemistry analysis of paraffin-embedded human colon using FPR1 Rabbit polyclonal antibody (STJ11103976) at dilution of 1:50 (40x lens). Perform high pressure antigen retrieval with 10 mM citrate buffer pH 6.0 before commencing with immunohistochemistry staining protocol.