

Anti-CD274 antibody (ECD) [S3966RM] (STJ11103966)
STJ11103966

GENERAL INFORMATION

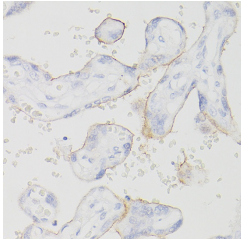
Product Type	Primary antibodies
Short Description	
Applications	WB/IHC-P/ELISA
Host/Source	Rabbit
Reactivity	Human

PRODUCT PROPERTIES

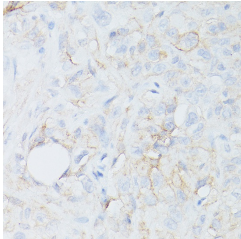
Clonality	Monoclonal
Clone ID	S3966RM
Concentration	Lot specific
Conjugation	Unconjugated
Purification	Affinity purification
Dilution Range	WB:1:500-1:1000 IHC-P:1:50-1:200 ELISA:Recommended starting concentration is 1 μ g/mL. Please optimize the concentration based on your specific assay requirements.
Formulation	PBS with 0.09% Sodium Azide, 0.05% BSA, 50% Glycerol, pH 7.3.
Isotype	IgG
Storage Instruction	Store at -20°C for up to 1 year from the date of receipt, and avoid repeat freeze-thaw cycles.

TARGET INFORMATION

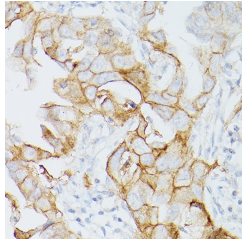
Gene ID	29126
Gene Symbol	CD274
Uniprot ID	PD1L1_HUMAN
Immunogen	ECD
Immunogen Region	ECD
Specificity	Recombinant protein of human PD-L1 extracellular domain.
Immunogen Sequence	



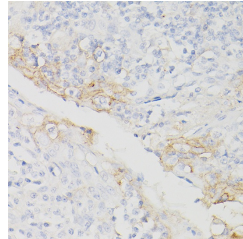
Immunohistochemistry analysis of PD-L1/CD274 in paraffin-embedded human placenta using PD-L1/CD274/CD274 Rabbit monoclonal antibody (STJ11103966) at dilution of 1:200 (40x lens). Perform high pressure antigen retrieval with 10 mM citrate buffer pH 6.0 before commencing with immunohistochemistry staining protocol.



Immunohistochemistry analysis of PD-L1/CD274 in paraffin-embedded Human lung cancer sarcoma using PD-L1/CD274/CD274 Rabbit monoclonal antibody (STJ11103966) at dilution of 1:200 (40x lens). Perform high pressure antigen retrieval with 10 mM citrate buffer pH 6.0 before commencing with immunohistochemistry staining protocol.



Immunohistochemistry analysis of PD-L1/CD274 in paraffin-embedded Human lung adenocarcinoma using PD-L1/CD274/CD274 Rabbit monoclonal antibody (STJ11103966) at dilution of 1:200 (40x lens). Perform high pressure antigen retrieval with 10 mM citrate buffer pH 6.0 before commencing with immunohistochemistry staining protocol.



Immunohistochemistry analysis of PD-L1/CD274 in paraffin-embedded Human chronic tonsillitis using PD-L1/CD274/CD274 Rabbit monoclonal antibody (STJ11103966) at dilution of 1:200 (40x lens). Perform high pressure antigen retrieval with 10 mM citrate buffer pH 6.0 before commencing with immunohistochemistry staining protocol.

This product is suitable for in-vitro studies under the RESEARCH USE ONLY [RUO] licence. This product must not be used as for diagnostic or other medical purposes.
St John's Laboratory Ltd, Knowledge Dock Business Centre, University Way, London, E16 2RD | Tel: 0208 223 3081