

Anti-2 NA-O-methylcytidine/Cm antibody (STJ11103959)

STJ11103959

GENERAL INFORMATION

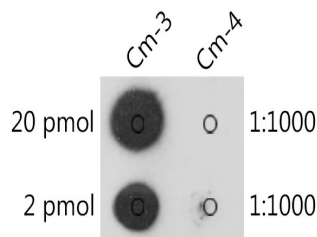
Product Type	Primary antibodies
Short Description	
Applications	DB/ELISA
Host/Source	Rabbit
Reactivity	Species independent

PRODUCT PROPERTIES

Clonality	Polyclonal
Clone ID	
Concentration	Lot specific
Conjugation	Unconjugated
Purification	Affinity purification
Dilution Range	DB:1:500-1:2000 ELISA:Recommended starting concentration is 1 Mu g/mL. Please optimize the concentration based on your specific assay requirements.
Formulation	PBS with 0.01% Thimerosal, 50% Glycerol, pH 7.3.
Isotype	IgG
Storage Instruction	Store at -20°C for up to 1 year from the date of receipt, and avoid repeat freeze-thaw cycles.

TARGET INFORMATION

Gene ID	
Gene Symbol	
Uniprot ID	
Immunogen	Cm conjugated to KLH
Immunogen Region	
Specificity	Cm
Immunogen Sequence	Cm conjugated to KLH



The 2 NA-O-methylcytidine/Cm Rabbit polyclonal antibody (STJ11103959) are tested in Dot Blot against 2 NA-O-methylcytidine (Cm) and unmodified cytidine. Cm-3/Biotin-5 NA CGATAACCACTAGT (Cm) 3 NA Cm-4/Biotin-5 NA CGATAACCACTAGTCS NA

This product is suitable for in-vitro studies under the RESEARCH USE ONLY [RUO] licence. This product must not be used as for diagnostic or other medical purposes.
St John's Laboratory Ltd, Knowledge Dock Business Centre, University Way, London, E16 2RD | Tel: 0208 223 3081