

Anti-XCR1 antibody (1-100) (STJ11103950)

STJ11103950

GENERAL INFORMATION

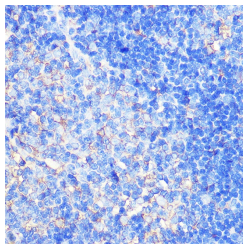
Product Type	Primary antibodies
Short Description	
Applications	IHC-P/ELISA
Host/Source	Rabbit
Reactivity	Rat

PRODUCT PROPERTIES

Clonality	Polyclonal
Clone ID	
Concentration	Lot specific
Conjugation	Unconjugated
Purification	Affinity purification
Dilution Range	IHC-P:1:50-1:200 ELISA:Recommended starting concentration is 1 µg/mL. Please optimize the concentration based on your specific assay requirements.
Formulation	PBS with 0.01% Thimerosal, 50% Glycerol, pH 7.3.
Isotype	IgG
Storage Instruction	Store at -20°C for up to 1 year from the date of receipt, and avoid repeat freeze-thaw cycles.

TARGET INFORMATION

Gene ID	2829
Gene Symbol	XCR1
Uniprot ID	XCR1_HUMAN
Immunogen	
Immunogen Region	1-100
Specificity	A synthetic peptide corresponding to a sequence within amino acids 1-100 of human XCR1 (NP_001019815.1).
Immunogen Sequence	MESSGNPESTTFFYYDLQSQ PCENQAWVFATLTTVLYCL VFLLSLVGNLVLVWLKYE SLESLTNIFILNCLSDLVF ACLLPVWISPYHWGWVLGDF



Immunohistochemistry analysis of XCR1 in paraffin-embedded rat thymus using XCR1 Rabbit polyclonal antibody (STJ11103950) at dilution of 1:100 (40x lens). Perform microwave antigen retrieval with 10 mM Tris/EDTA buffer pH 9.0 before commencing with immunohistochemistry staining protocol.

This product is suitable for in-vitro studies under the RESEARCH USE ONLY [RUO] licence. This product must not be used as for diagnostic or other medical purposes.
St John's Laboratory Ltd, Knowledge Dock Business Centre, University Way, London, E16 2RD | Tel: 0208 223 3081