

Anti-CD3E+CD3G antibody (1-207) [S3942RM] (STJ11103942)

STJ11103942

GENERAL INFORMATION

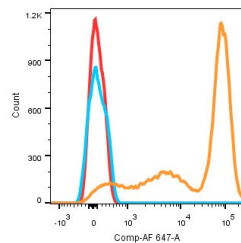
Product Type	Primary antibodies
Short Description	
Applications	WB/FC/ELISA
Host/Source	Rabbit
Reactivity	Human

PRODUCT PROPERTIES

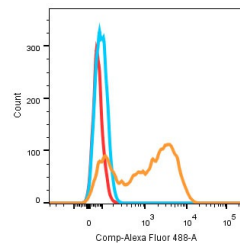
Clonality	Monoclonal
Clone ID	S3942RM
Concentration	Lot specific
Conjugation	Unconjugated
Purification	Affinity purification
Dilution	WB:1:1000-1:5000
Range	FC:1:500-1:1000
	ELISA:Recommended starting concentration is 1 Mu g/mL. Please optimize the concentration based on your specific assay requirements.
Formulation	PBS with 0.05% Proclin300, 0.05% BSA, 50% Glycerol, pH 7.3.
Isotype	IgG
Storage Instruction	Store at -20°C for up to 1 year from the date of receipt, and avoid repeat freeze-thaw cycles.

TARGET INFORMATION

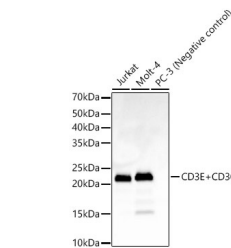
Gene ID	916 917
Gene Symbol	CD3E CD3G
Uniprot ID	CD3E_HUMAN CD3G_HUMAN
Immunogen	1-207
Immunogen Region	
Specificity	Recombinant fusion protein containing a sequence corresponding to amino acids 1-207 (CD3E) & 1-182 (CD3G) of human CD3 epsilon&CD3 gamma Heterodimer.
Immunogen Sequence	MSGTHWRVLGLCLLSVGWV GODGNEEMGGITQTPYKVS I SGTTVILTCPQYPGSEILWQ HNDKNIGGDEDDKNIGSDED HLSLKEFSELEQSGYYVCYP RGSKPEDANFYLLRARVCE NCMEMDVMSVATIVVDICI TGGLLLVYYWSKNRKAKAK PVTTRGAGAGRRGQNKERP PPVNPDPYPIRKQQRDLYS GLNQRR I (CD3E) &MEQGKG LAVLILAILLQGTLAQ



Human peripheral blood lymphocytes stained with CD3E+CD3G Rabbit monoclonal antibody (STJ11103942) (1 Mu g/mL) (orange). Secondary antibody only staining (Blue) and unstained sample (red) were used as a control.



Flow cytometric analysis of CD3E+CD3G Rabbit monoclonal antibody (STJ11103942) (1 Mu g/mL) in Jurkats cells (orange) compare to rabbit IgG isotype control (blue) and non-staining control (Red).



Western blot analysis of various lysates, using CD3E+CD3G Rabbit monoclonal antibody (STJ11103942) at 1:2000 dilution. Secondary antibody: HRP Goat Anti-Rabbit IgG (H+L) (STJS000856) at 1:10000 dilution. Lysates/proteins: 25 Mu g per lane. Blocking buffer: 3% nonfat dry milk in TBST. Detection: ECL Basic Kit. Exposure time: 60s.

This product is suitable for in-vitro studies under the RESEARCH USE ONLY [RUO] licence. This product must not be used as for diagnostic or other medical purposes.
St John's Laboratory Ltd, Knowledge Dock Business Centre, University Way, London, E16 2RD | Tel: 0208 223 3081