

Anti-PPP2R5E antibody (50-150) (STJ11103927)
STJ11103927

GENERAL INFORMATION

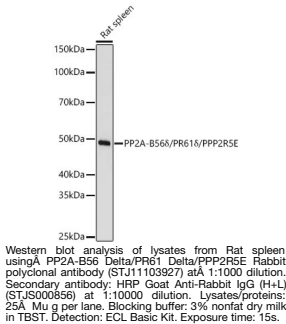
Product Type	Primary antibodies
Short Description	
Applications	WB/ELISA
Host/Source	Rabbit
Reactivity	Rat

PRODUCT PROPERTIES

Clonality	Polyclonal
Clone ID	
Concentration	Lot specific
Conjugation	Unconjugated
Purification	Affinity purification
Dilution Range	WB:1:500-1:1000 ELISA:Recommended starting concentration is 1 Mu g/mL. Please optimize the concentration based on your specific assay requirements.
Formulation	PBS with 0.01% Thimerosal, 50% Glycerol, pH 7.3.
Isotype	IgG
Storage Instruction	Store at -20°C for up to 1 year from the date of receipt, and avoid repeat freeze-thaw cycles.

TARGET INFORMATION

Gene ID	5529
Gene Symbol	PPP2R5E
Uniprot ID	2A5E_HUMAN
Immunogen	
Immunogen Region	50-150
Specificity	A synthetic peptide corresponding to a sequence within amino acids 50-150 of human PP2A-B56 Delta/PR61 Delta/PPP2R5E (NP_006237.1).
Immunogen Sequence	LLKDVPSSEQPELFLKKLQQ CCVIFDFMDTSLDKMKEYK RSTLNELVDYITISRGCLTE QTYPEVVRMVSCNIFRTLPP SDSNEFDPEEDEPTLEASWP H



This product is suitable for in-vitro studies under the RESEARCH USE ONLY [RUO] licence. This product must not be used as for diagnostic or other medical purposes.
St John's Laboratory Ltd, Knowledge Dock Business Centre, University Way, London, E16 2RD | Tel: 0208 223 3081