

Anti-RGS2 antibody (1-211) (STJ11103885)

STJ11103885

GENERAL INFORMATION

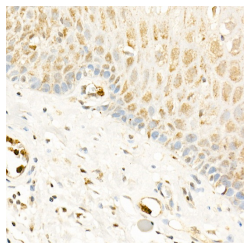
Product Type	Primary antibodies
Short Description	
Applications	WB/IHC-P/ELISA
Host/Source	Rabbit
Reactivity	Human

PRODUCT PROPERTIES

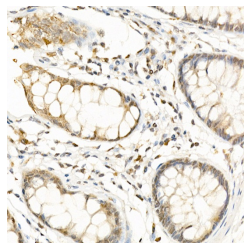
Clonality	Polyclonal
Clone ID	
Concentration	Lot specific
Conjugation	Unconjugated
Purification	Affinity purification
Dilution	WB:1:500-1:2000
Range	IHC-P:1:50-1:200
	ELISA:Recommended starting concentration is 1 µg/mL. Please optimize the concentration based on your specific assay requirements.
Formulation	PBS with 0.02% Sodium Azide, 50% Glycerol, pH 7.3.
Isotype	IgG
Storage Instruction	Store at -20°C for up to 1 year from the date of receipt, and avoid repeat freeze-thaw cycles.

TARGET INFORMATION

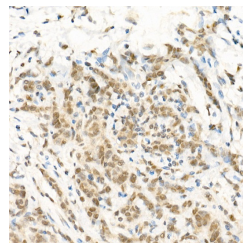
Gene ID	5997
Gene Symbol	RGS2
Uniprot ID	RGS2_HUMAN
Immunogen	
Immunogen Region	1-211
Specificity	Recombinant fusion protein containing a sequence corresponding to amino acids 1-211 of human RGS2 (NP_002914.1).
Immunogen Sequence	MQSAMFLAVQHDCRPMDKSA GSGHKSEEKREKMKRTLLKD WKTRLSYFLQNSSTPGKPKT GKKSQQAQAFIKPSPEEAQLW SEAFDELLASKYGLAAAFRAF LKSEFCEENIEFWLACEDFK KTKSPQKLSSKARKIYTDFI EKEAPKEINIDFQTKTLIAQ NIQEATSGCFTTAQKRVYSL MENNSYPRFLESEFYQDLCK KPQITTEPHAT



Immunohistochemistry analysis of paraffin-embedded human esophagus using RGS2 Rabbit polyclonal antibody (STJ11103885) at dilution of 1:100 (40x lens). Perform high pressure antigen retrieval with 10 mM citrate buffer pH 6.0 before commencing with immunohistochemistry staining protocol.



Immunohistochemistry analysis of paraffin-embedded human colon using RGS2 Rabbit polyclonal antibody (STJ11103885) at dilution of 1:100 (40x lens). Perform high pressure antigen retrieval with 10 mM citrate buffer pH 6.0 before commencing with immunohistochemistry staining protocol.



Immunohistochemistry analysis of paraffin-embedded human breast cancer using RGS2 Rabbit polyclonal antibody (STJ11103885) at dilution of 1:100 (40x lens). Perform high pressure antigen retrieval with 10 mM citrate buffer pH 6.0 before commencing with immunohistochemistry staining protocol.

This product is suitable for in-vitro studies under the RESEARCH USE ONLY [RUO] licence. This product must not be used as for diagnostic or other medical purposes.
St John's Laboratory Ltd, Knowledge Dock Business Centre, University Way, London, E16 2RD | Tel: 0208 223 3081