

Anti-N6-methyladenosine/m6A antibody (STJ11103883)
STJ11103883

GENERAL INFORMATION

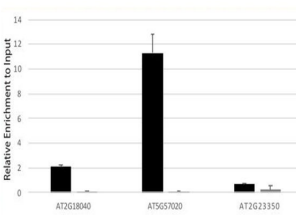
Product Type	Primary antibodies
Short Description	
Applications	DB/IF/CC/ELISA/meRIP
Host/Source	Rabbit
Reactivity	Species independent

PRODUCT PROPERTIES

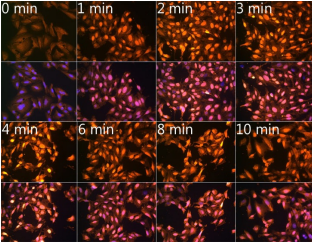
Clonality	Polyclonal
Clone ID	
Concentration	Lot specific
Conjugation	Unconjugated
Purification	Affinity purification
Dilution Range	DB:1:500-1:2000 IF/CC:1:50-1:200 ELISA:Recommended starting concentration is 1 μ g/mL. Please optimize the concentration based on your specific assay requirements. meRIP:1:50-1:200
Formulation	PBS with 0.05% Proclin300, 50% Glycerol, pH 7.3.
Isotype	IgG
Storage Instruction	Store at -20°C for up to 1 year from the date of receipt, and avoid repeat freeze-thaw cycles.

TARGET INFORMATION

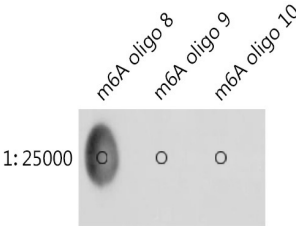
Gene ID	
Gene Symbol	
Uniprot ID	
Immunogen	
Immunogen Region	
Specificity	Chemical compounds corresponding to N6-methyladenosine/m6A.
Immunogen Sequence	



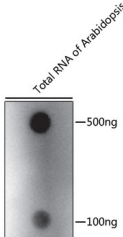
Immunoprecipitation analysis of 25 μ g total RNA extracts of Arabidopsis (25 μ g total RNA extracts of Arabidopsis was diluted to 200 μ l IP buffer system) using 2 μ l m6A antibody (STJ11103883).



U2OS cells pre-treated with BrdU were subjected UVC irradiation incubated at 37 $^{\circ}$ C for the indicated time, and stained for m6A Polyclonal Antibody (STJ11103883). DAPI, 4 μ M, 6-diamidino-2-phenylindole. Global UVC irradiation exceed cytoplasmic level, peaking at 2 min after irradiation and diminishing over the following 8 min.



The m6A rabbit polyclonal antibody (STJ11103883) are tested in Dot Blot against N6-methyladenosine (m6A) and unmodified adenosine. Oligomer 8- ATAACGG-m6A-CCGAATGG Oligomer 9- ATAACGGACCGAATGG Oligomer 10- AAAAAAAAAAAAAAAAA-biotin.



The m6A rabbit polyclonal antibody (500ng/100ng, STJ11103883) are tested in Dot Blot against total RNA of Arabidopsis. (This image is courtesy of an anonymous Abreview)