

## Anti-ABCA12 antibody (2456-2595) (STJ11103881)

STJ11103881

### GENERAL INFORMATION

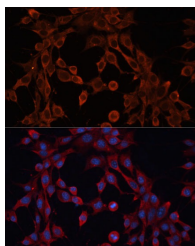
<b>Product Type</b>	Primary antibodies
<b>Short Description</b>	
<b>Applications</b>	IF/ICC/ELISA
<b>Host/Source</b>	Rabbit
<b>Reactivity</b>	Mouse

### PRODUCT PROPERTIES

<b>Clonality</b>	Polyclonal
<b>Clone ID</b>	
<b>Concentration</b>	Lot specific
<b>Conjugation</b>	Unconjugated
<b>Purification</b>	Affinity purification
<b>Dilution</b>	IF/ICC:1:50-1:200
<b>Range</b>	ELISA:Recommended starting concentration is 1 µg/mL. Please optimize the concentration based on your specific assay requirements.
<b>Formulation</b>	PBS with 0.01% Thimerosal, 50% Glycerol, pH 7.3.
<b>Isotype</b>	IgG
<b>Storage</b>	Store at -20°C for up to 1 year from the date of receipt, and avoid repeat freeze-thaw cycles.
<b>Instruction</b>	

### TARGET INFORMATION

<b>Gene ID</b>	26154
<b>Gene Symbol</b>	ABCA12
<b>Uniprot ID</b>	ABCAC_HUMAN
<b>Immunogen</b>	
<b>Immunogen Region</b>	2456-2595
<b>Specificity</b>	Recombinant fusion protein containing a sequence corresponding to amino acids 2456-2595 of human ABCA12 (NP_775099.2).
<b>Immunogen Sequence</b>	CTRLAIMVNGKFQCIGSLQH IKSFRGFRGFTVKVHLKNNKV TMTLTQFMQLHFPKTYLKD QHLSMLEYHVPVTAGGVANI FDLLETNKTALNITNFLVSQ TTLEEVFINFAKDQKSYETA DTSSQGSTISVDSQDDQMES



Immunofluorescence analysis of NIH-3T3 cells using ABCA12 Rabbit polyclonal antibody (STJ11103881) at dilution of 1:100 (40x lens). Secondary antibody: Cy3 Goat Anti-Rabbit IgG (H+L) at 1:500 dilution. Blue: DAPI for nuclear staining.