

Anti-ATRX antibody (2100-2200) (STJ11103874)

STJ11103874

GENERAL INFORMATION

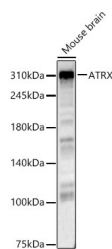
Product Type	Primary antibodies
Short Description	
Applications	WB/ELISA
Host/Source	Rabbit
Reactivity	Human/Mouse

PRODUCT PROPERTIES

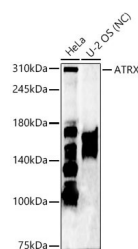
Clonality	Polyclonal
Clone ID	
Concentration	Lot specific
Conjugation	Unconjugated
Purification	Affinity purification
Dilution Range	WB:1:2000-1:6000 ELISA:Recommended starting concentration is 1 Mu g/mL. Please optimize the concentration based on your specific assay requirements.
Formulation	PBS with 0.05% Proclin300, 50% Glycerol, pH 7.3.
Isotype	IgG
Storage Instruction	Store at -20°C for up to 1 year from the date of receipt, and avoid repeat freeze-thaw cycles.

TARGET INFORMATION

Gene ID	546
Gene Symbol	ATRX
Uniprot ID	ATRX_HUMAN
Immunogen	
Immunogen Region	2100-2200
Specificity	A synthetic peptide corresponding to a sequence within amino acids 2100-2200 of human ATRX (NP_000480.3).
Immunogen Sequence	EEFNDETNRGRLFIISTKA GSLGINLVAANRVIIFDASW NPSYDIQSIFRVYRFGQTKP VYVYRFLAQGTMEDKIYDRQ VTKQSLSRVVDQQQVERHF T



Western blot analysis of Mouse brain, using ATRX Rabbit polyclonal antibody (STJ11103874) at 1:5000 dilution. Secondary antibody: HRP Goat Anti-Rabbit IgG (H+L) (STJS000856) at 1:10000 dilution. Lysates/proteins: 25 Mu g per lane. Blocking buffer: 3% nonfat dry milk in TBST. Detection: ECL Enhanced Kit. Exposure time: 60s.



Western blot analysis of various lysates, using ATRX Rabbit polyclonal antibody (STJ11103874) at 1:5000 dilution. Secondary antibody: HRP Goat Anti-Rabbit IgG (H+L) (STJS000856) at 1:10000 dilution. Lysates/proteins: 25 Mu g per lane. Blocking buffer: 3% nonfat dry milk in TBST. Detection: ECL Enhanced Kit. Negative control (NC) : U-2 OS. Exposure time: 60s.

This product is suitable for in-vitro studies under the RESEARCH USE ONLY [RUO] licence. This product must not be used as for diagnostic or other medical purposes.
St John's Laboratory Ltd, Knowledge Dock Business Centre, University Way, London, E16 2RD | Tel: 0208 223 3081