

Anti-SRSF1 antibody (1-248) (STJ11103862)

STJ11103862

GENERAL INFORMATION

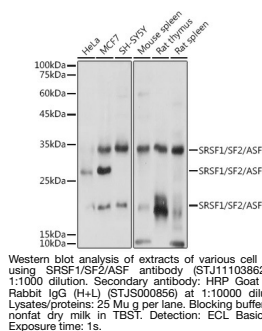
| | |
|--------------------------|--------------------|
| Product Type | Primary antibodies |
| Short Description | |
| Applications | WB/ELISA |
| Host/Source | Rabbit |
| Reactivity | Human/Mouse/Rat |

PRODUCT PROPERTIES

| | |
|----------------------|---|
| Clonality | Polyclonal |
| Clone ID | |
| Concentration | Lot specific |
| Conjugation | Unconjugated |
| Purification | Affinity purification |
| Dilution | WB:1:500-1:1000 |
| Range | ELISA:Recommended starting concentration is 1 µg/mL. Please optimize the concentration based on your specific assay requirements. |
| Formulation | PBS with 0.02% Sodium Azide, 50% Glycerol, pH 7.3. |
| Isotype | IgG |
| Storage | Store at -20°C for up to 1 year from the date of receipt, and avoid repeat freeze-thaw cycles. |
| Instruction | |

TARGET INFORMATION

| | |
|---------------------------|--|
| Gene ID | 6426 |
| Gene Symbol | SRSF1 |
| Uniprot ID | SRSF1_HUMAN |
| Immunogen | |
| Immunogen Region | 1-248 |
| Specificity | A synthetic peptide corresponding to a sequence within amino acids 1-248 of human SRSF1/SF2/ASF (NP_008855.1). MSGGGVIRGPAGNDCRIYV GNLPPDIRTKDIEDVFYKYG AIRDIDLKNRRGGPPFAFVE FEDPRDAEDAVYGRDGYDYD GYRLRVEFPRSGRGTGRGGG GGGGGGAPRGRYGPSSRRSE NRWVSLPSPSGSWQDLKDH MREAGDVCYADVYRDGTGW EVRKEDMTYAVRKLDNTKF RSHEGETAYIRKVDGPRSP SYGRSRSRSRSRSRSRSRN SRSRSYSPRRSRGSPRYSP |
| Immunogen Sequence | |



This product is suitable for in-vitro studies under the RESEARCH USE ONLY [RUO] licence. This product must not be used as for diagnostic or other medical purposes.
St John's Laboratory Ltd, Knowledge Dock Business Centre, University Way, London, E16 2RD | Tel: 0208 223 3081