

Anti-CCL7 antibody (1-99) (STJ11103858)

STJ11103858

GENERAL INFORMATION

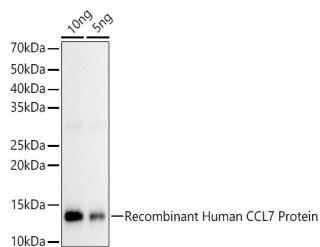
Product Type	Primary antibodies
Short Description	
Applications	WB/ELISA
Host/Source	Rabbit
Reactivity	Human/Rat

PRODUCT PROPERTIES

Clonality	Polyclonal
Clone ID	
Concentration	Lot specific
Conjugation	Unconjugated
Purification	Affinity purification
Dilution Range	WB:1:500-1:1000 ELISA:Recommended starting concentration is 1 μ g/mL. Please optimize the concentration based on your specific assay requirements.
Formulation	PBS with 0.05% Proclin300, 50% Glycerol, pH 7.3.
Isotype	IgG
Storage Instruction	Store at -20°C for up to 1 year from the date of receipt, and avoid repeat freeze-thaw cycles.

TARGET INFORMATION

Gene ID	6354
Gene Symbol	CCL7
Uniprot ID	CCL7_HUMAN
Immunogen	
Immunogen Region	1-99
Specificity	Recombinant fusion protein containing a sequence corresponding to amino acids 1-99 of human CCL7 (NP_006264.2).
Immunogen Sequence	MKASALLCLLLTAAAFSPQ GLAQPVGINTSTCCYRFIN KKIPKQRLESYRRTTSSHCP REAVIFKTKLDKEICADPTQ KWWQDFMKHLDKKTQTPKL



Western blot analysis of various lysates, using CCL7 Rabbit polyclonal antibody (STJ11103858) at 1:1000 dilution. Secondary antibody: HRP Goat Anti-Rabbit IgG (H+L) (STJS000856) at 1:10000 dilution. Lysates/proteins: 25 μ g per lane. Blocking buffer: 3% nonfat dry milk in TBST. Detection: ECL Basic Kit. Exposure time: 20s.

This product is suitable for in-vitro studies under the RESEARCH USE ONLY [RUO] licence. This product must not be used as for diagnostic or other medical purposes.
St John's Laboratory Ltd, Knowledge Dock Business Centre, University Way, London, E16 2RD | Tel: 0208 223 3081