

Anti-S100A1 antibody (1-94) (STJ11103849)

STJ11103849

GENERAL INFORMATION

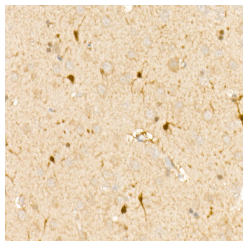
Product Type	Primary antibodies
Short Description	
Applications	WB/IHC-P/ELISA
Host/Source	Rabbit
Reactivity	Human/Mouse/Rat

PRODUCT PROPERTIES

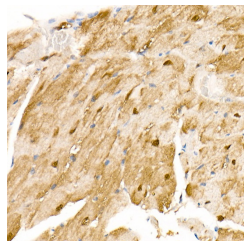
Clonality	Polyclonal
Clone ID	
Concentration	Lot specific
Conjugation	Unconjugated
Purification	Affinity purification
Dilution Range	IF/ICC: 1:100-1:500 ELISA: Recommended starting concentration is 1 µg/mL. Please optimize the concentration based on your specific assay requirements.
Formulation	PBS with 0.05% Proclin300, 50% Glycerol, pH 7.3.
Isotype	IgG
Storage Instruction	Store at -20°C for up to 1 year from the date of receipt, and avoid repeat freeze-thaw cycles.

TARGET INFORMATION

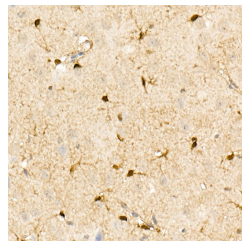
Gene ID	6271
Gene Symbol	S100A1
Uniprot ID	S10A1_HUMAN
Immunogen	
Immunogen Region	1-94
Specificity	Recombinant fusion protein containing a sequence corresponding to amino acids 1-94 of human S100/S100A1 (NP_006262.1).
Immunogen Sequence	MGSELETAMETLINVFHAHS GKEGDKYKLSKKELKELLQT ELSGFLDAQKDQDAVDKVMK ELDENGDEVDQFEYVVLVA ALTACNNFFWENS



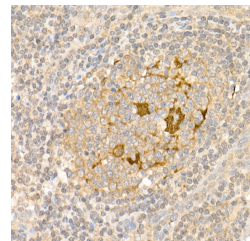
Immunohistochemistry analysis of S100/S100A1 in paraffin-embedded rat brain using S100/S100A1 Rabbit polyclonal antibody (STJ11103849) at dilution of 1:50 (40x lens). Perform high pressure antigen retrieval with 10 mM citrate buffer pH 6.0 before commencing with immunohistochemistry staining protocol.



Immunohistochemistry analysis of S100/S100A1 in paraffin-embedded mouse heart using S100/S100A1 Rabbit polyclonal antibody (STJ11103849) at dilution of 1:50 (40x lens). Perform high pressure antigen retrieval with 10 mM citrate buffer pH 6.0 before commencing with immunohistochemistry staining protocol.



Immunohistochemistry analysis of S100/S100A1 in paraffin-embedded mouse brain using S100/S100A1 Rabbit polyclonal antibody (STJ11103849) at dilution of 1:50 (40x lens). Perform high pressure antigen retrieval with 10 mM citrate buffer pH 6.0 before commencing with immunohistochemistry staining protocol.



Immunohistochemistry analysis of S100/S100A1 in paraffin-embedded human tonsil using S100/S100A1 Rabbit polyclonal antibody (STJ11103849) at dilution of 1:50 (40x lens). Perform high pressure antigen retrieval with 10 mM citrate buffer pH 6.0 before commencing with immunohistochemistry staining protocol.

This product is suitable for in-vitro studies under the RESEARCH USE ONLY [RUO] licence. This product must not be used as for diagnostic or other medical purposes.
St John's Laboratory Ltd, Knowledge Dock Business Centre, University Way, London, E16 2RD | Tel: 0208 223 3081