

Anti-CDK6 antibody (226-326) (STJ11103846)

STJ11103846

GENERAL INFORMATION

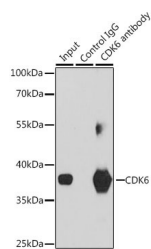
Product Type	Primary antibodies
Short Description	
Applications	WB/IHC-P/IF/ICC/IP/ELISA
Host/Source	Rabbit
Reactivity	Human/Mouse

PRODUCT PROPERTIES

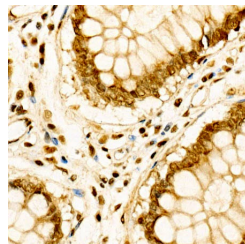
Clonality	Polyclonal
Clone ID	
Concentration	Lot specific
Conjugation	Unconjugated
Purification	Affinity purification
Dilution Range	WB:1:500-1:1000 IHC-P:1:50-1:200 IF/ICC:1:50-1:200 IP:0.5 Mu g-4 Mu g antibody for 200 Mu g-400 Mu g extracts of whole cells ELISA:Recommended starting concentration is 1 Mu g/mL. Please optimize the concentration based on your specif
Formulation	PBS with 0.09% Sodium Azide, 50% Glycerol, pH 7.3.
Isotype	IgG
Storage Instruction	Store at -20°C for up to 1 year from the date of receipt, and avoid repeat freeze-thaw cycles.

TARGET INFORMATION

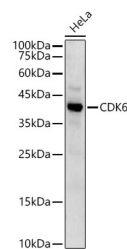
Gene ID	1021
Gene Symbol	CDK6
Uniprot ID	CDK6_HUMAN
Immunogen	
Immunogen Region	226-326
Specificity	Recombinant fusion protein containing a sequence corresponding to amino acids 226-326 of human CDK6 (NP_001250.1).
Immunogen Sequence	DQLGKILDVIGLPGEEDWPR DVALPRQAFHKSQAQIEKF VTDIDELGKDLLLKCLTFNP AKRISAYSALSHPYFQDLER CKENLDLPSQNTSELNT A



Immunoprecipitation analysis of 200 Mu g extracts of Jurkat cells, using 3 Mu g CDK6 antibody (STJ11103846). Western blot was performed from the immunoprecipitate using CDK6 antibody (STJ11103846) at a dilution of 1:1000.



Immunohistochemistry analysis of CDK6 in paraffin-embedded human colon carcinoma using CDK6 Rabbit polyclonal antibody (STJ11103846) at dilution of 1:100 (40x lens). Perform high pressure antigen retrieval with 10 mM citrate buffer pH 6.0 before commencing with immunohistochemistry staining protocol.



Western blot analysis of lysates from HeLa cells, using CDK6 Rabbit polyclonal antibody (STJ11103846) at 1:300 dilution. Secondary antibody: HRP-Goat Anti-Rabbit IgG (H+L) (STJS000856) at 1:10000 dilution. Lysates/proteins: 25 Mu g per lane. Blocking buffer: 3% nonfat dry milk in TBST. Detection: ECL Enhanced Kit. Exposure time: 30s.