

Anti-NR4A1 antibody (200-300) (STJ11103838)

STJ11103838

GENERAL INFORMATION

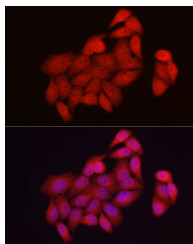
Product Type	Primary antibodies
Short Description	
Applications	WB/IF/ICC/ELISA
Host/Source	Rabbit
Reactivity	Human

PRODUCT PROPERTIES

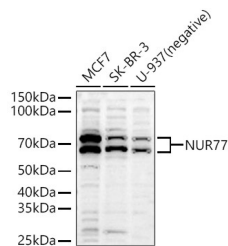
Clonality	Polyclonal
Clone ID	
Concentration	Lot specific
Conjugation	Unconjugated
Purification	Affinity purification
Dilution Range	WB:1:500-1:1000 IF/ICC:1:50-1:200 ELISA:Recommended starting concentration is 1 Mu g/mL. Please optimize the concentration based on your specific assay requirements.
Formulation	PBS with 0.05% Proclin300, 50% Glycerol, pH 7.3.
Isotype	IgG
Storage	Store at -20°C for up to 1 year from the date of receipt, and avoid repeat freeze-thaw cycles.
Instruction	

TARGET INFORMATION

Gene ID	3164
Gene Symbol	NR4A1
Uniprot ID	NR4A1_HUMAN
Immunogen	
Immunogen Region	200-300
Specificity	A synthetic peptide corresponding to a sequence within amino acids 200-300 of human NUR77 (NP_002126.2).
Immunogen Sequence	PSLAQSPLKLFPSQATHQLG EGESYSMTAFPGGLAPTSPL LEGSGILDTPVTSTKARSGA PGGSEGRCAVCGDNASCQHY GVRTCEGCKGFFKRTVQKNA K



Immunofluorescence analysis of HeLa cells using NUR77 Rabbit polyclonal antibody (STJ11103838) at dilution of 1:50 (40x lens). Blue: DAPI for nuclear staining.



Western blot analysis of various lysates, using NUR77 antibody (STJ11103838) at 1:1000 dilution. Secondary antibody: HRP Goat Anti-Rabbit IgG (H+L) (STJS000856) at 1:10000 dilution. Lysates/proteins: 25 Mu g per lane. Blocking buffer: 3% nonfat dry milk in TBST. Detection: ECL Basic Kit. Exposure time: 30s.