

Anti-PDE4C antibody (638-712) (STJ11103837)

STJ11103837

GENERAL INFORMATION

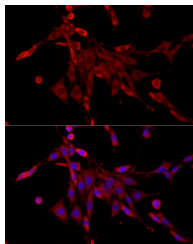
Product Type	Primary antibodies
Short Description	
Applications	IF/ICC/ELISA
Host/Source	Rabbit
Reactivity	Human/Rat

PRODUCT PROPERTIES

Clonality	Polyclonal
Clone ID	
Concentration	Lot specific
Conjugation	Unconjugated
Purification	Affinity purification
Dilution Range	IF/ICC:1:100-1:500 ELISA:Recommended starting concentration is 1 µg/mL. Please optimize the concentration based on your specific assay requirements.
Formulation	PBS with 0.01% Thimerosal, 50% Glycerol, pH 7.3.
Isotype	IgG
Storage Instruction	Store at -20°C for up to 1 year from the date of receipt, and avoid repeat freeze-thaw cycles.

TARGET INFORMATION

Gene ID	5143
Gene Symbol	PDE4C
Uniprot ID	PDE4C_HUMAN
Immunogen	
Immunogen Region	638-712
Specificity	Recombinant fusion protein containing a sequence corresponding to amino acids 638-712 of human PDE4C (NP_000914.2).
Immunogen Sequence	IPRSPDLTNPERDGPDRFQ FELTLEEAEEDDEEEEEE ETALAKEALELPDTELLSPE AGPDPGDLPLDNQRT



Immunofluorescence analysis of PC-12 cells using PDE4C Rabbit polyclonal antibody (STJ11103837) at dilution of 1:400 (40x lens). Secondary antibody: Cy3 Goat Anti-Rabbit IgG (H+L) at 1:500 dilution. Blue: DAPI for nuclear staining.

This product is suitable for in-vitro studies under the RESEARCH USE ONLY [RUO] licence. This product must not be used as for diagnostic or other medical purposes.
St John's Laboratory Ltd, Knowledge Dock Business Centre, University Way, London, E16 2RD | Tel: 0208 223 3081