

## Anti-BCL2A1 antibody (70-150) (STJ11103794)

STJ11103794

### GENERAL INFORMATION

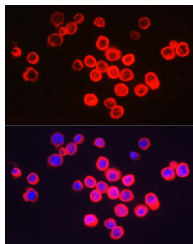
|                          |                    |
|--------------------------|--------------------|
| <b>Product Type</b>      | Primary antibodies |
| <b>Short Description</b> |                    |
| <b>Applications</b>      | WB/IF/ICC/ELISA    |
| <b>Host/Source</b>       | Rabbit             |
| <b>Reactivity</b>        | Human              |

### PRODUCT PROPERTIES

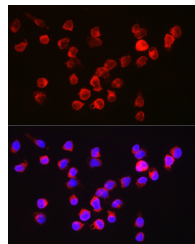
|                            |  |
|----------------------------|--|
| <b>Clonality</b>           | Polyclonal   |
| <b>Clone ID</b>            |  |
| <b>Concentration</b>       | Lot specific   |
| <b>Conjugation</b>         | Unconjugated   |
| <b>Purification</b>        | Affinity purification  |
| <b>Dilution Range</b>      | WB:1:500-1:2000<br>IF/ICC:1:50-1:200<br>ELISA:Recommended starting concentration is 1 $\mu$ g/mL. Please optimize the concentration based on your specific assay requirements. |
| <b>Formulation</b>         | PBS with 0.05% Proclin300, 50% Glycerol, pH 7.3.   |
| <b>Isotype</b>             | IgG  |
| <b>Storage Instruction</b> | Store at -20°C for up to 1 year from the date of receipt, and avoid repeat freeze-thaw cycles.   |

### TARGET INFORMATION

|                           |  |
|---------------------------|--|
| <b>Gene ID</b>            | 597  |
| <b>Gene Symbol</b>        | BCL2A1   |
| <b>Uniprot ID</b>         | B2LA1_HUMAN  |
| <b>Immunogen</b>          |  |
| <b>Immunogen Region</b>   | 70-150   |
| <b>Specificity</b>        | A synthetic peptide corresponding to a sequence within amino acids 70-150 of human BCL2A1 (NP_004040.1). |
| <b>Immunogen Sequence</b> | LFNQVMEKEFEDGIINWGRI VTIFAFEGILIKLLRQQA PDVDTYKEISYFVAEFIMNN TGEWIRQNGGWENGFKKFE P                       |



Immunofluorescence analysis of THP-1 cells using BCL2A1 Rabbit polyclonal antibody (STJ11103794) at dilution of 1:200 (40x lens). Blue: DAPI for nuclear staining.



Immunofluorescence analysis of Jurkat cells using BCL2A1 Rabbit polyclonal antibody (STJ11103794) at dilution of 1:200 (40x lens). Blue: DAPI for nuclear staining.

This product is suitable for in-vitro studies under the RESEARCH USE ONLY [RUO] licence. This product must not be used as for diagnostic or other medical purposes.  
St John's Laboratory Ltd, Knowledge Dock Business Centre, University Way, London, E16 2RD | Tel: 0208 223 3081