

Anti-Phospho-MAP3K5-S967 antibody (STJ11103750)

STJ11103750

GENERAL INFORMATION

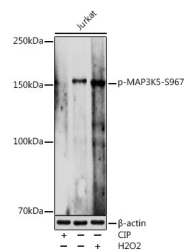
Product Type	Primary antibodies
Short Description	
Applications	WB/ELISA
Host/Source	Rabbit
Reactivity	Human

PRODUCT PROPERTIES

Clonality	Polyclonal
Clone ID	
Concentration	Lot specific
Conjugation	Unconjugated
Purification	Affinity purification
Dilution Range	WB:1:500-1:1000 ELISA:Recommended starting concentration is 1 µg/mL. Please optimize the concentration based on your specific assay requirements.
Formulation	PBS with 0.01% Thimerosal, 50% Glycerol, pH 7.3.
Isotype	IgG
Storage Instruction	Store at -20°C for up to 1 year from the date of receipt, and avoid repeat freeze-thaw cycles.

TARGET INFORMATION

Gene ID	4217
Gene Symbol	MAP3K5
Uniprot ID	M3K5_HUMAN
Immunogen	
Immunogen Region	
Specificity	A phospho specific peptide corresponding to residues surrounding S967 of human MAP3K5
Immunogen Sequence	



Western blot analysis of lysates from Jurkat cells, using Phospho-MAP3K5-S967 Rabbit pAb (STJ11103750) at 1:1000 dilution. Jurkat cells were treated by CIP (20µL/400u) at 37 °C for 1 hour. Jurkat cells were treated by Hydrogen Peroxide (2 mM) at 37 °C for 2 minutes after serum-starvation overnight. Secondary antibody: HRP-conjugated Goat anti-Rabbit IgG (H+L) (STJS000858) at 1:10000 dilution. Lysates/proteins: 25 µg per lane. Blocking buffer: 3% nonfat dry milk in TBST. Detection: ECL Enhanced Kit. Exposure time: 180s.