

# Anti-Phospho-cJun-T91 antibody (STJ11103749)

STJ11103749

## GENERAL INFORMATION

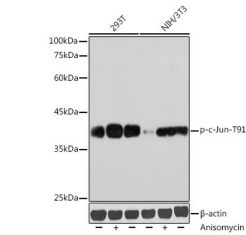
<b>Product Type</b>	Primary antibodies
<b>Short Description</b>	
<b>Applications</b>	WB/IHC-P/IF/ICC/ELISA
<b>Host/Source</b>	Rabbit
<b>Reactivity</b>	Human/Mouse/Rat

## PRODUCT PROPERTIES

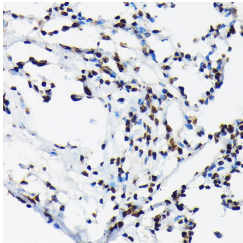
<b>Clonality</b>	Polyclonal
<b>Clone ID</b>	
<b>Concentration</b>	Lot specific
<b>Conjugation</b>	Unconjugated
<b>Purification</b>	Affinity purification
<b>Dilution Range</b>	WB:1:500-1:1000 IHC-P:1:50-1:200 IF/ICC:1:50-1:200 ELISA:Recommended starting concentration is 1 µg/mL. Please optimize the concentration based on your specific assay requirements.
<b>Formulation</b>	PBS with 0.01% Thimerosal, 50% Glycerol, pH 7.3.
<b>Isotype</b>	IgG
<b>Storage Instruction</b>	Store at -20°C for up to 1 year from the date of receipt, and avoid repeat freeze-thaw cycles.

## TARGET INFORMATION

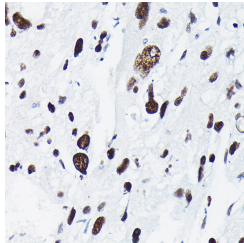
<b>Gene ID</b>	3725
<b>Gene Symbol</b>	JUN
<b>Uniprot ID</b>	JUN_HUMAN
<b>Immunogen</b>	TTTPT
<b>Immunogen Region</b>	
<b>Specificity</b>	A synthetic phosphorylated peptide around T91 of human JUN (NP_002219.1).
<b>Immunogen Sequence</b>	TTTPT



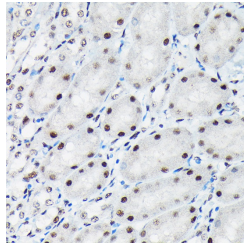
Western blot analysis of various lysates using Phospho-c-Jun-T91 Rabbit pAb (STJ11103749) at 1:1000 dilution. Both 293T cells and NIH/3T3 cells were treated by Anisomycin (25 µg/mL) at 37 °C for 30 minutes after serum-starvation overnight. Both 293T cells and NIH/3T3 cells were treated by UV at room temperature for 15-30 minutes.  
Secondary antibody: HRP-conjugated Goat anti-Rabbit IgG (H+L) (STJS000856) at 1:10000 dilution.  
Lysates/proteins: 25 µg per lane.  
Blocking buffer: 3% nonfat dry milk in TBST.  
Detection: ECL Basic Kit  
Exposure time: 180s.



Immunohistochemistry analysis of paraffin-embedded Rat lung using Phospho-c-Jun-T91 Rabbit pAb (STJ11103749) at dilution of 1:50 (40x lens). High pressure antigen retrieval performed with 0.01M Citrate Buffer (pH 6.0) prior to immunohistochemistry staining.



Immunohistochemistry analysis of paraffin-embedded Human liver cancer using Phospho-c-Jun-T91 Rabbit pAb (STJ11103749) at dilution of 1:50 (40x lens). High pressure antigen retrieval performed with 0.01M Citrate Buffer (pH 6.0) prior to immunohistochemistry staining.



Immunohistochemistry analysis of paraffin-embedded Mouse kidney using Phospho-c-Jun-T91 Rabbit pAb (STJ11103749) at dilution of 1:50 (40x lens). High pressure antigen retrieval performed with 0.01M Citrate Buffer (pH 6.0) prior to immunohistochemistry staining.

This product is suitable for in-vitro studies under the RESEARCH USE ONLY [RUO] licence. This product must not be used as for diagnostic or other medical purposes.

St John's Laboratory Ltd, Knowledge Dock Business Centre, University Way, London, E16 2RD | Tel: 0208 223 3081