

## Anti-Phospho-VANGL2-S79/S82/S84 antibody [S4MR] (STJ11103744)

STJ11103744

### GENERAL INFORMATION

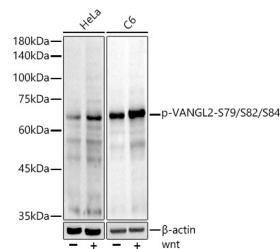
<b>Product Type</b>	Primary antibodies
<b>Short Description</b>	
<b>Applications</b>	WB/ELISA
<b>Host/Source</b>	Rabbit
<b>Reactivity</b>	Human/Rat

### PRODUCT PROPERTIES

<b>Clonality</b>	Monoclonal
<b>Clone ID</b>	S4MR
<b>Concentration</b>	Lot specific
<b>Conjugation</b>	Unconjugated
<b>Purification</b>	Affinity purification
<b>Dilution Range</b>	WB:1:500-1:1000 ELISA:Recommended starting concentration is 1 Mu g/mL. Please optimize the concentration based on your specific assay requirements.
<b>Formulation</b>	PBS with 0.05% Proclin300, 0.05% BSA, 50% Glycerol, pH 7.3.
<b>Isotype</b>	IgG
<b>Storage Instruction</b>	Store at -20°C for up to 1 year from the date of receipt, and avoid repeat freeze-thaw cycles.

### TARGET INFORMATION

<b>Gene ID</b>	57216
<b>Gene Symbol</b>	VANGL2
<b>Uniprot ID</b>	VANG2_HUMAN
<b>Immunogen</b>	GTSEHSISHD
<b>Immunogen Region</b>	
<b>Specificity</b>	A phospho specific peptide corresponding to residues surrounding S79/S82/S84 of human VANGL2
<b>Immunogen Sequence</b>	GTSEHSISHD



Western blot analysis of various lysates using Phospho-VANGL2-S79/S82/S84 Rabbit mAb (STJ11103744) at 1:1000 dilution. HeLa and C6 cells were treated by wnt (100ng/ml) for 30 minutes.  
Secondary antibody: HRP-conjugated Goat anti-Rabbit IgG (P+L) (STJ/S000866) at 1:1000 dilution.  
Lysates/proteins: 25 Mu g per lane.  
Blocking buffer: 3% nonfat dry milk in TBST.  
Detection: ECL Basic Kit  
Exposure time: 90s.

This product is suitable for in-vitro studies under the RESEARCH USE ONLY [RUO] licence. This product must not be used as for diagnostic or other medical purposes.  
St John's Laboratory Ltd, Knowledge Dock Business Centre, University Way, London, E16 2RD | Tel: 0208 223 3081