

Anti-Phospho-PLA2G4A-S505 antibody (STJ11103723)

STJ11103723

GENERAL INFORMATION

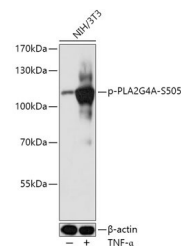
Product Type	Primary antibodies
Short Description	
Applications	WB/ELISA
Host/Source	Rabbit
Reactivity	Human/Mouse/Rat

PRODUCT PROPERTIES

Clonality	Polyclonal
Clone ID	
Concentration	Lot specific
Conjugation	Unconjugated
Purification	Affinity purification
Dilution Range	WB:1:500-1:2000 ELISA:Recommended starting concentration is 1 μ g/mL. Please optimize the concentration based on your specific assay requirements.
Formulation	PBS with 0.01% Thimerosal, 50% Glycerol, pH 7.3.
Isotype	IgG
Storage Instruction	Store at -20°C for up to 1 year from the date of receipt, and avoid repeat freeze-thaw cycles.

TARGET INFORMATION

Gene ID	5321
Gene Symbol	PLA2G4A
Uniprot ID	PA24A_HUMAN
Immunogen	PLSPL
Immunogen Region	
Specificity	A synthetic phosphorylated peptide around S505 of human PLA2G4A (NP_077734.1).
Immunogen Sequence	PLSPL



Western blot analysis of lysates from NIH/3T3 cells, using Phospho-PLA2G4A-S505 Rabbit pAb (STJ11103723) at 1:1000 dilution. NIH/3T3 cells were treated by TNF- α (20 ng/mL) at 37 $^{\circ}$ C for 30 minutes.
Secondary antibody: HRP-conjugated Goat anti-Rabbit IgG (H+L) (STJS000856) at 1:10000 dilution.
Lysates/proteins: 25 μ g per lane.
Blocking buffer: 3% BSA.
Detection: ECL Basic Kit
Exposure time: 10s.

This product is suitable for in-vitro studies under the RESEARCH USE ONLY [RUO] licence. This product must not be used as for diagnostic or other medical purposes.
St John's Laboratory Ltd, Knowledge Dock Business Centre, University Way, London, E16 2RD | Tel: 0208 223 3081