

Anti-GFP-Tag antibody (1-238) [S1MR] (STJ11103711)
STJ11103711

GENERAL INFORMATION

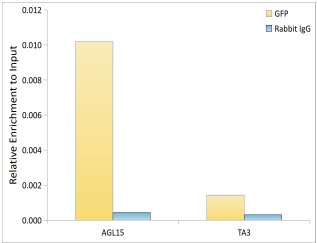
Product Type	Primary antibodies
Short Description	
Applications	WB/IF/IC/CP/ELISA/ChIP
Host/Source	Rabbit
Reactivity	Species independent

PRODUCT PROPERTIES

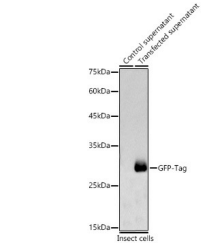
Clonality	Monoclonal
Clone ID	S1MR
Concentration	Lot specific
Conjugation	Unconjugated
Purification	Affinity purification
Dilution Range	WB:1:50000-1:700000 IF/CC:1:50-1:200
Formulation	IP:0.5 Mu g-4 Mu g antibody for 100 Mu g-400 Mu g extracts of whole cells ELISA:Recommended starting concentration is 1 Mu g/mL. Please optimize the concentration based on your specific assay requirement
Isotype	PBS with 0.05% Proclin300, 0.05% BSA, 50% Glycerol, pH 7.3.
Storage Instruction	IgG Store at -20°C for up to 1 year from the date of receipt, and avoid repeat freeze-thaw cycles.

TARGET INFORMATION

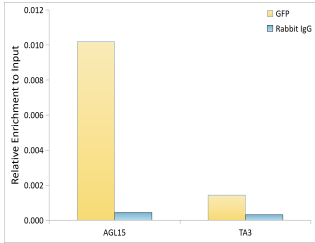
Gene ID	
Gene Symbol	
Uniprot ID	
Immunogen	
Immunogen Region	1-238
Specificity	Recombinant fusion protein containing a sequence corresponding to amino acids 1-238 of GFP.
Immunogen Sequence	MSKGEELFTGVVPIVELDG DVNGHKFSVSGEGEGDATYG KLTCLKICTTGKLPVPWPTL VTTLTYGVCFSRYPDHMKR HDFFKSAMPEGYVQERTISF KDDGNYKTRAEVKFEGDTLV NRIELKGIDFKEDGNILGHK LEYNYNSHNYYITADKQKNG IKANFKTRHNIEDGGVQLAD HYQNTPIGDDGPVLLPDNHY LSTQSALSKDPNEKRDHMLV LEFVTAAGITHGMDELYK



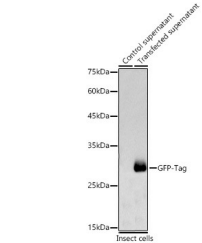
Chromatin immunoprecipitation was performed with cross-linked chromatin from *Arabidopsis thaliana* leaf cells transfected with GFP, using a Rabbit anti GFP-Tag mAb (STJ11103711) and a Rabbit IgG (STJ11105763). The amount of immunoprecipitated DNA was checked by quantitative PCR. Histogram compares the ratio of the immunoprecipitated DNA versus the input.



Western blot analysis of lysates from wild type (WT) and insect cells transfected with GFP using Rabbit anti GFP-Tag mAb (STJ11103711) at 1:200000 dilution incubated overnight at 4 °C. Secondary antibody: HRP-conjugated Goat anti-Rabbit IgG (H+L) (STJS000856) at 1:10000 dilution. Lysates/proteins: 20 Mu g per lane. Blocking buffer: 3% nonfat dry milk in TBST. Detection: ECL Basic Kit (Exposure time: 30s.



Chromatin immunoprecipitation was performed with cross-linked chromatin from *Arabidopsis thaliana* leaf cells transfected with GFP, using a Rabbit anti GFP-Tag mAb (STJ11103711) and a Rabbit IgG (STJ11105763). The amount of immunoprecipitated DNA was checked by quantitative PCR. Histogram compares the ratio of the immunoprecipitated DNA versus the input.



Western blot analysis of lysates from wild type (WT) and insect cells transfected with GFP using Rabbit anti GFP-Tag mAb (STJ11103711) at 1:200000 dilution incubated overnight at 4 °C. Secondary antibody: HRP-conjugated Goat anti-Rabbit IgG (H+L) (STJS000856) at 1:10000 dilution. Lysates/proteins: 20 Mu g per lane. Blocking buffer: 3% nonfat dry milk in TBST. Detection: ECL Basic Kit (Exposure time: 30s.