

Anti-DDDDK-Tag antibody (STJ11103696)

STJ11103696

GENERAL INFORMATION

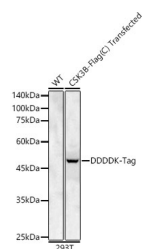
Product Type	Primary antibodies
Short Description	
Applications	WB/IF/ICC/IP
Host/Source	Rabbit
Reactivity	Species independent

PRODUCT PROPERTIES

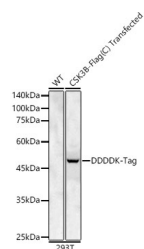
Clonality	Polyclonal
Clone ID	
Concentration	Lot specific
Conjugation	Unconjugated
Purification	Affinity purification
Dilution Range	WB:1:2000-1:10000 IF/CC:1:50-1:200 IP:0.5 Mu g-4 Mu g antibody for 200 Mu g-400 Mu g extracts of whole cells
Formulation	PBS with 0.05% Proclin300, 50% Glycerol, pH 7.3.
Isotype	IgG
Storage Instruction	Store at -20°C for up to 1 year from the date of receipt, and avoid repeat freeze-thaw cycles.

TARGET INFORMATION

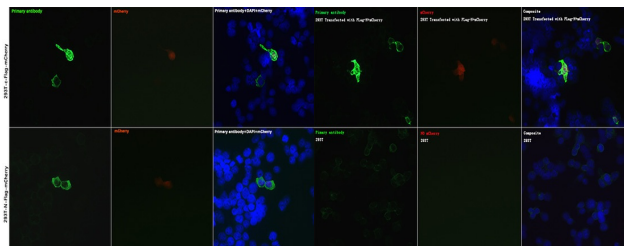
Gene ID	
Gene Symbol	
Uniprot ID	
Immunogen	DYKDDDDK
Immunogen Region	
Specificity	A synthetic peptide corresponding to DDDDK tag.
Immunogen Sequence	DYKDDDDK



Western blot analysis of lysates from wild type (WT) and 293T cells transfected with DDDDK-Tag using Rabbit anti DDDDK-Tag pAb (STJ11103696) at 1:10000 dilution. Secondary antibody: (STJS000856) at 1:10000 dilution. Lysates/proteins: 25A Mu g per lane. Blocking buffer: 3% nonfat dry milk in TBST. Detection: ECL Basic Kit. Exposure time: 1s.



Immunofluorescence analysis of 293T cells transfected with Flag-N (mCherry) and 293T cells transfected with Flag-N (mCherry) using Rabbit anti DDDDK-Tag pAb (STJ11103696) at dilution of 1:50 (40x lens). Secondary antibody: Cy3-conjugated Goat anti-Rabbit IgG (H+L) (STJS001166) at 1:500 dilution. Blue: DAPI for nuclear staining.



Immunoprecipitation analysis of 300 Mu g extracts of 293T-SERPINE1-Flag-GFP cells using 3 Mu g DDDDK-Tag pAb (STJ11103696). Western blot was performed from the immunoprecipitate using DDDDK-Tag pAb (STJ11103696) at a dilution of 1:50000. Blue: DAPI for nuclear staining.

This product is suitable for in-vitro studies under the RESEARCH USE ONLY [RUO] licence. This product must not be used as for diagnostic or other medical purposes.
St John's Laboratory Ltd, Knowledge Dock Business Centre, University Way, London, E16 2RD | Tel: 0208 223 3081