

Anti-GAPDH antibody (1-335) [S2MR] (STJ11103682)

STJ11103682

GENERAL INFORMATION

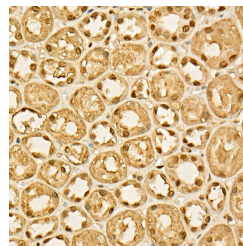
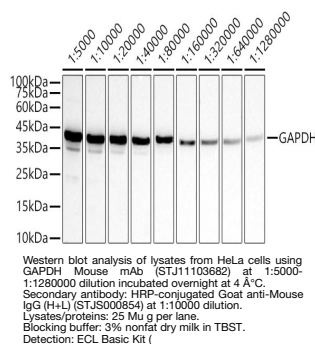
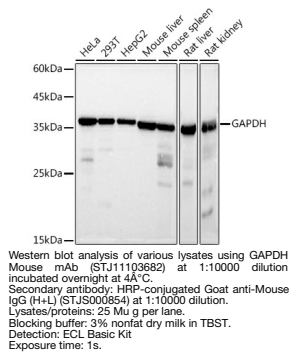
Product Type	Primary antibodies
Short Description	
Applications	WB/IHC-P/IF/ICC/ELISA
Host/Source	Mouse
Reactivity	Human/Mouse/Rat

PRODUCT PROPERTIES

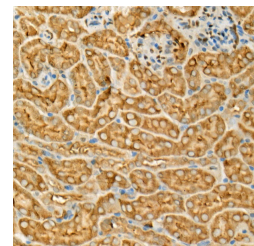
Clonality	Monoclonal
Clone ID	S2MR
Concentration	Lot specific
Conjugation	Unconjugated
Purification	Affinity purification
Dilution	WB:1:5000-1:50000
Range	IHC-P:1:50-1:200 IF/ICC:1:50-1:200 ELISA:Recommended starting concentration is 1 Mu g/mL. Please optimize the concentration based on your specific assay requirements.
Formulation	PBS with 0.05% Proclin300, 50% Glycerol, pH 7.3.
Isotype	IgG2bk
Storage	Store at -20°C for up to 1 year from the date of receipt, and avoid repeat freeze-thaw cycles.
Instruction	

TARGET INFORMATION

Gene ID	2597
Gene Symbol	GAPDH
Uniprot ID	G3P_HUMAN
Immunogen	
Immunogen Region	1-335
Specificity	Recombinant fusion protein containing a sequence corresponding to amino acids 1-335 of human GAPDH (P04406).
Immunogen Sequence	MGKVKGVNGFGRIGRLVTR AAFNSGKVDIVAINDPFIDL NYMVYMFQYDSTHGKFGHTV KAENGKLVINGNPITTFQER DKSIKWGDAGAEYVVESTG VFTTMEKAGAHLGGGAKRVI ISAPSDAPMFVGMVGNHEKY DNSLKIISNASCTTNCLAPL AKVIHNDNFGIVEGLMTTVHA ITATQKTVDGPSGKLWRDGR GALQNIIPASTGAAKAVGKV IPELNGKLTGMAFRVPTAN



Immunohistochemistry analysis of paraffin-embedded Human kidney using GAPDH Mouse mAb (STJ11103682) at dilution of 1:100 (40x lens). High pressure antigen retrieval performed with 0.01M Citrate Buffer (pH 6.0) prior to immunohistochemistry staining.



Immunohistochemistry analysis of paraffin-embedded Mouse kidney using GAPDH Mouse mAb (STJ11103682) at dilution of 1:100 (40x lens). High pressure antigen retrieval performed with 0.01M Citrate Buffer (pH 6.0) prior to immunohistochemistry staining.

This product is suitable for in-vitro studies under the RESEARCH USE ONLY [RUO] licence. This product must not be used as for diagnostic or other medical purposes.
St John's Laboratory Ltd, Knowledge Dock Business Centre, University Way, London, E16 2RD | Tel: 0208 223 3081